

**Anti-BUD31 Antibody**  
Rabbit polyclonal antibody to BUD31  
Catalog # AP60721

## Specification

---

### Anti-BUD31 Antibody - Product Information

Application	WB
Primary Accession	<a href="#">P41223</a>
Reactivity	Human, Rat, Zebrafish, Bovine
Host	Rabbit
Clonality	Polyclonal
Calculated MW	17000

### Anti-BUD31 Antibody - Additional Information

**Gene ID** 8896

#### Other Names

EDG2; Protein BUD31 homolog; Protein EDG-2; Protein G10 homolog

#### Target/Specificity

Recognizes endogenous levels of BUD31 protein.

#### Dilution

WB~~WB (1/500 - 1/1000)

#### Format

Liquid in 0.42% Potassium phosphate, 0.87% Sodium chloride, pH 7.3, 30% glycerol, and 0.09% (W/V) sodium azide.

#### Storage

Store at -20 °C. Stable for 12 months from date of receipt

### Anti-BUD31 Antibody - Protein Information

**Name** BUD31

**Synonyms** EDG2

#### Function

Involved in the pre-mRNA splicing process (PubMed: [28076346](http://www.uniprot.org/citations/28076346), PubMed: [28502770](http://www.uniprot.org/citations/28502770)). May play a role as regulator of AR transcriptional activity; may increase AR transcriptional activity (PubMed: [25091737](http://www.uniprot.org/citations/25091737)).

#### Cellular Location

Nucleus Note=Detected in chromatin at the promoter of AR target genes

### Tissue Location

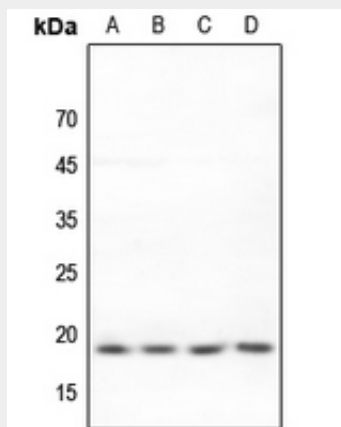
Detected in epithelial and stromal cells in benign prostate hyperplasia tissue (at protein level)

### Anti-BUD31 Antibody - Protocols

Provided below are standard protocols that you may find useful for product applications.

- [Western Blot](#)
- [Blocking Peptides](#)
- [Dot Blot](#)
- [Immunohistochemistry](#)
- [Immunofluorescence](#)
- [Immunoprecipitation](#)
- [Flow Cytometry](#)
- [Cell Culture](#)

### Anti-BUD31 Antibody - Images



Western blot analysis of BUD31 expression in MCF7 (A), K562 (B), A549 (C), rat kidney (D) whole cell lysates.

### Anti-BUD31 Antibody - Background

KLH-conjugated synthetic peptide encompassing a sequence within the N-term region of human BUD31. The exact sequence is proprietary.