

**Anti-GKAP Antibody**  
Rabbit polyclonal antibody to GKAP  
Catalog # AP60718

**Specification**

---

**Anti-GKAP Antibody - Product Information**

Application	WB
Primary Accession	<a href="#">O14490</a>
Other Accession	<a href="#">O9D415</a>
Reactivity	Human, Mouse, Rat, Chicken, Dog
Host	Rabbit
Clonality	Polyclonal
Calculated MW	108873

**Anti-GKAP Antibody - Additional Information**

**Gene ID** 9229

**Other Names**

DAP1; GKAP; Disks large-associated protein 1; DAP-1; Guanylate kinase-associated protein; hGKAP; PSD-95/SAP90-binding protein 1; SAP90/PSD-95-associated protein 1; SAPAP1

**Target/Specificity**

Recognizes endogenous levels of GKAP protein.

**Dilution**

WB~~WB (1/500 - 1/1000)

**Format**

Liquid in 0.42% Potassium phosphate, 0.87% Sodium chloride, pH 7.3, 30% glycerol, and 0.09% (W/V) sodium azide.

**Storage**

Store at -20 °C. Stable for 12 months from date of receipt

**Anti-GKAP Antibody - Protein Information**

**Name** DLGAP1

**Synonyms** DAP1, GKAP

**Function**

Part of the postsynaptic scaffold in neuronal cells.

**Cellular Location**

Cell membrane; Peripheral membrane protein. Postsynaptic density. Synapse

**Tissue Location**

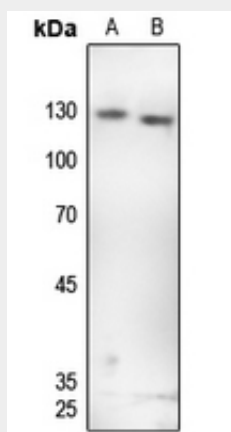
Expressed in brain.

### Anti-GKAP Antibody - Protocols

Provided below are standard protocols that you may find useful for product applications.

- [Western Blot](#)
- [Blocking Peptides](#)
- [Dot Blot](#)
- [Immunohistochemistry](#)
- [Immunofluorescence](#)
- [Immunoprecipitation](#)
- [Flow Cytometry](#)
- [Cell Culture](#)

### Anti-GKAP Antibody - Images



Western blot analysis of GKAP expression in H446 (A), mouse brain (B) whole cell lysates.

### Anti-GKAP Antibody - Background

KLH-conjugated synthetic peptide encompassing a sequence within the C-term region of human GKAP. The exact sequence is proprietary.