

**Anti-14-3-3 zeta (pT232) Antibody**  
Rabbit polyclonal antibody to 14-3-3 zeta (pT232)  
Catalog # AP60715

## Specification

---

### Anti-14-3-3 zeta (pT232) Antibody - Product Information

Application	WB
Primary Accession	<a href="#">P63104</a>
Other Accession	<a href="#">P63101</a>
Reactivity	Human, Mouse, Rat, Pig, Chicken, Bovine, SARS
Host	Rabbit
Clonality	Polyclonal
Calculated MW	27745

### Anti-14-3-3 zeta (pT232) Antibody - Additional Information

Gene ID 7534

#### Other Names

14-3-3 protein zeta/delta; Protein kinase C inhibitor protein 1; KCIP-1

#### Target/Specificity

Recognizes endogenous levels of 14-3-3 zeta (pT232) protein.

#### Dilution

WB~~WB (1/500 - 1/1000), IH (1/100 - 1/200)

#### Format

Liquid in 0.42% Potassium phosphate, 0.87% Sodium chloride, pH 7.3, 30% glycerol, and 0.09% (W/V) sodium azide.

#### Storage

Store at -20 °C. Stable for 12 months from date of receipt

### Anti-14-3-3 zeta (pT232) Antibody - Protein Information

Name YWHAZ

#### Function

Adapter protein implicated in the regulation of a large spectrum of both general and specialized signaling pathways (PubMed: [14578935](http://www.uniprot.org/citations/14578935), PubMed: [15071501](http://www.uniprot.org/citations/15071501), PubMed: [15644438](http://www.uniprot.org/citations/15644438), PubMed: [16376338](http://www.uniprot.org/citations/16376338), PubMed: [16959763](http://www.uniprot.org/citations/16959763), PubMed: [31024343](http://www.uniprot.org/citations/31024343), PubMed: [9360956](http://www.uniprot.org/citations/9360956))

target="\_blank">9360956</a>). Binds to a large number of partners, usually by recognition of a phosphoserine or phosphothreonine motif (PubMed:<a href="http://www.uniprot.org/citations/35662396" target="\_blank">35662396</a>). Binding generally results in the modulation of the activity of the binding partner (PubMed:<a href="http://www.uniprot.org/citations/35662396" target="\_blank">35662396</a>). Promotes cytosolic retention and inactivation of TFEB transcription factor by binding to phosphorylated TFEB (PubMed:<a href="http://www.uniprot.org/citations/35662396" target="\_blank">35662396</a>). Induces ARHGEF7 activity on RAC1 as well as lamellipodia and membrane ruffle formation (PubMed:<a href="http://www.uniprot.org/citations/16959763" target="\_blank">16959763</a>). In neurons, regulates spine maturation through the modulation of ARHGEF7 activity (By similarity).

#### Cellular Location

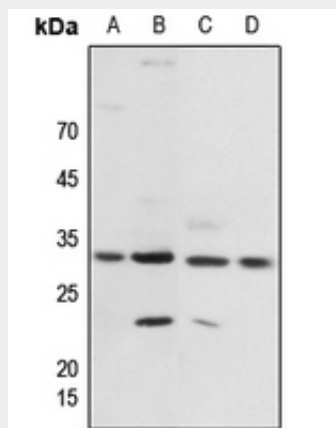
Cytoplasm. Melanosome. Note=Located to stage I to stage IV melanosomes.

#### Anti-14-3-3 zeta (pT232) Antibody - Protocols

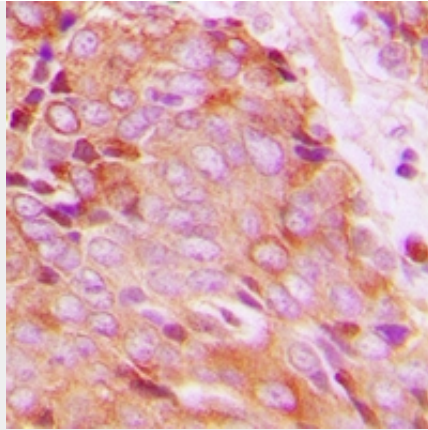
Provided below are standard protocols that you may find useful for product applications.

- [Western Blot](#)
- [Blocking Peptides](#)
- [Dot Blot](#)
- [Immunohistochemistry](#)
- [Immunofluorescence](#)
- [Immunoprecipitation](#)
- [Flow Cytometry](#)
- [Cell Culture](#)

#### Anti-14-3-3 zeta (pT232) Antibody - Images



Western blot analysis of 14-3-3 zeta (pT232) expression in Hela (A), AGS (B), rat brain (C), rat spleen (D) whole cell lysates.



Immunohistochemical analysis of 14-3-3 zeta (pT232) staining in human breast cancer formalin fixed paraffin embedded tissue section. The section was pre-treated using heat mediated antigen retrieval with sodium citrate buffer (pH 6.0). The section was then incubated with the antibody at room temperature and detected using an HRP conjugated compact polymer system. DAB was used as the chromogen. The section was then counterstained with haematoxylin and mounted with DPX.

#### **Anti-14-3-3 zeta (pT232) Antibody - Background**

KLH-conjugated synthetic peptide encompassing a sequence within the C-term region of human 14-3-3 zeta. The exact sequence is proprietary.