

Anti-B-RAF (pS446) Antibody
Rabbit polyclonal antibody to B-RAF (pS446)
Catalog # AP60713

Specification

Anti-B-RAF (pS446) Antibody - Product Information

Application	WB
Primary Accession	P15056
Other Accession	P28028
Reactivity	Human, Mouse, Rat, Chicken
Host	Rabbit
Clonality	Polyclonal
Calculated MW	84437

Anti-B-RAF (pS446) Antibody - Additional Information

Gene ID 673

Other Names

BRAF1; RAFB1; Serine/threonine-protein kinase B-raf; Proto-oncogene B-Raf; p94; v-Raf murine sarcoma viral oncogene homolog B1

Target/Specificity

Recognizes endogenous levels of B-RAF (pS446) protein.

Dilution

WB~~WB (1/500 - 1/1000), IH (1/100 - 1/200), IP (1/10 - 1/100)

Format

Liquid in 0.42% Potassium phosphate, 0.87% Sodium chloride, pH 7.3, 30% glycerol, and 0.09% (W/V) sodium azide.

Storage

Store at -20 °C. Stable for 12 months from date of receipt

Anti-B-RAF (pS446) Antibody - Protein Information

Name BRAF ([HGNC:1097](#))

Synonyms BRAF1, RAFB1

Function

Protein kinase involved in the transduction of mitogenic signals from the cell membrane to the nucleus (Probable). Phosphorylates MAP2K1, and thereby activates the MAP kinase signal transduction pathway (PubMed: [21441910](http://www.uniprot.org/citations/21441910), PubMed: [29433126](http://www.uniprot.org/citations/29433126)). Phosphorylates PFKFB2 (PubMed: [36402789](http://www.uniprot.org/citations/36402789)). May play a

role in the postsynaptic responses of hippocampal neurons (PubMed:1508179).

Cellular Location

Nucleus. Cytoplasm. Cell membrane. Note=Colocalizes with RGS14 and RAF1 in both the cytoplasm and membranes.

Tissue Location

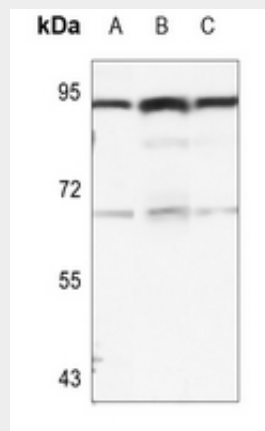
Brain and testis.

Anti-B-RAF (pS446) Antibody - Protocols

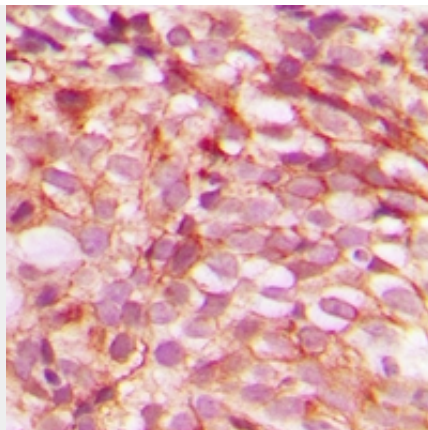
Provided below are standard protocols that you may find useful for product applications.

- [Western Blot](#)
- [Blocking Peptides](#)
- [Dot Blot](#)
- [Immunohistochemistry](#)
- [Immunofluorescence](#)
- [Immunoprecipitation](#)
- [Flow Cytometry](#)
- [Cell Culture](#)

Anti-B-RAF (pS446) Antibody - Images



Western blot analysis of B-RAF (pS446) expression in HEK293T (A), mouse brain (B), rat brain (C) whole cell lysates.



Immunohistochemical analysis of B-RAF (pS446) staining in human breast cancer formalin fixed paraffin embedded tissue section. The section was pre-treated using heat mediated antigen retrieval with sodium citrate buffer (pH 6.0). The section was then incubated with the antibody at room temperature and detected using an HRP conjugated compact polymer system. DAB was used as the chromogen. The section was then counterstained with haematoxylin and mounted with DPX.

Anti-B-RAF (pS446) Antibody - Background

KLH-conjugated synthetic peptide encompassing a sequence within the center region of human B-RAF. The exact sequence is proprietary.