

**Anti-Apolipoprotein O-Like Antibody**  
Rabbit polyclonal antibody to Apolipoprotein O-Like  
Catalog # AP60705

## Specification

---

### Anti-Apolipoprotein O-Like Antibody - Product Information

Application	WB
Primary Accession	<a href="#">O6UXV4</a>
Other Accession	<a href="#">O78IK4</a>
Reactivity	Human, Mouse, Rat, Bovine
Host	Rabbit
Clonality	Polyclonal
Calculated MW	29159

### Anti-Apolipoprotein O-Like Antibody - Additional Information

**Gene ID** 139322

#### Other Names

CXorf33; FAM121A; Apolipoprotein O-like; Protein FAM121A

#### Target/Specificity

Recognizes endogenous levels of Apolipoprotein O-Like protein.

#### Dilution

WB~~WB (1/500 - 1/1000), IP (1/10 - 1/100)

#### Format

Liquid in 0.42% Potassium phosphate, 0.87% Sodium chloride, pH 7.3, 30% glycerol, and 0.09% (W/V) sodium azide.

#### Storage

Store at -20 °C. Stable for 12 months from date of receipt

### Anti-Apolipoprotein O-Like Antibody - Protein Information

**Name** APOOL

**Synonyms** CXorf33, FAM121A, MIC27

#### Function

Component of the MICOS complex, a large protein complex of the mitochondrial inner membrane that plays crucial roles in the maintenance of crista junctions, inner membrane architecture, and formation of contact sites to the outer membrane. Specifically binds to cardiolipin (in vitro) but not to the precursor lipid phosphatidylglycerol. Plays a crucial role in crista junction formation and mitochondrial function (PubMed: [23704930](http://www.uniprot.org/citations/23704930)), (PubMed: [25764979](http://www.uniprot.org/citations/25764979)).

### Cellular Location

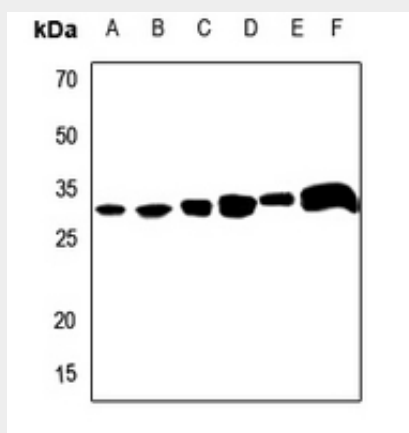
Mitochondrion inner membrane; Multi-pass membrane protein. Mitochondrion

### Anti-Apolipoprotein O-Like Antibody - Protocols

Provided below are standard protocols that you may find useful for product applications.

- [Western Blot](#)
- [Blocking Peptides](#)
- [Dot Blot](#)
- [Immunohistochemistry](#)
- [Immunofluorescence](#)
- [Immunoprecipitation](#)
- [Flow Cytometry](#)
- [Cell Culture](#)

### Anti-Apolipoprotein O-Like Antibody - Images



Western blot analysis of Apolipoprotein O-Like expression in Hela (A), H446 (B), mouse kidney (C), mouse heart (D), rat kidney (E), rat heart (F) whole cell lysates.

### Anti-Apolipoprotein O-Like Antibody - Background

KLH-conjugated synthetic peptide encompassing a sequence within the C-term region of human Apolipoprotein O-Like. The exact sequence is proprietary.