

Anti-c-FOS (pS32) Antibody
Rabbit polyclonal antibody to c-FOS (pS32)
Catalog # AP60700

Specification

Anti-c-FOS (pS32) Antibody - Product Information

Application	WB
Primary Accession	P01100
Other Accession	P01101
Reactivity	Human, Mouse, Rat, Pig, Bovine
Host	Rabbit
Clonality	Polyclonal
Calculated MW	40695

Anti-c-FOS (pS32) Antibody - Additional Information

Gene ID 2353

Other Names

G0S7; Proto-oncogene c-Fos; Cellular oncogene fos; G0/G1 switch regulatory protein 7

Target/Specificity

Recognizes endogenous levels of c-FOS (pS32) protein.

Dilution

WB~~WB (1/500 - 1/1000)

Format

Liquid in 0.42% Potassium phosphate, 0.87% Sodium chloride, pH 7.3, 30% glycerol, and 0.09% (W/V) sodium azide.

Storage

Store at -20 °C. Stable for 12 months from date of receipt

Anti-c-FOS (pS32) Antibody - Protein Information

Name FOS

Synonyms G0S7

Function

Nuclear phosphoprotein which forms a tight but non-covalently linked complex with the JUN/AP-1 transcription factor. In the heterodimer, FOS and JUN/AP-1 basic regions each seems to interact with symmetrical DNA half sites. On TGF-beta activation, forms a multimeric SMAD3/SMAD4/JUN/FOS complex at the AP1/SMAD-binding site to regulate TGF-beta-mediated signaling. Has a critical function in regulating the development of cells destined to form and maintain the skeleton. It is thought to have an important role in signal transduction, cell proliferation and differentiation. In growing cells, activates phospholipid synthesis, possibly by

activating CDS1 and PI4K2A. This activity requires Tyr-dephosphorylation and association with the endoplasmic reticulum.

Cellular Location

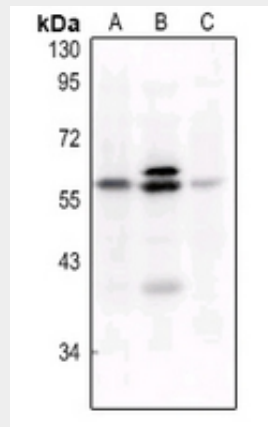
Nucleus. Endoplasmic reticulum. Cytoplasm, cytosol. Note=In quiescent cells, present in very small amounts in the cytosol. Following induction of cell growth, first localizes to the endoplasmic reticulum and only later to the nucleus. Localization at the endoplasmic reticulum requires dephosphorylation at Tyr-10 and Tyr- 30

Anti-c-FOS (pS32) Antibody - Protocols

Provided below are standard protocols that you may find useful for product applications.

- [Western Blot](#)
- [Blocking Peptides](#)
- [Dot Blot](#)
- [Immunohistochemistry](#)
- [Immunofluorescence](#)
- [Immunoprecipitation](#)
- [Flow Cytometry](#)
- [Cell Culture](#)

Anti-c-FOS (pS32) Antibody - Images



Western blot analysis of c-FOS (pS32) expression in HeLa (A), A375 (B), mouse embryo (C) whole cell lysates.

Anti-c-FOS (pS32) Antibody - Background

KLH-conjugated synthetic peptide encompassing a sequence within the N-term region of human c-FOS. The exact sequence is proprietary.