

Anti-TCEAL1 Antibody
Rabbit polyclonal antibody to TCEAL1
Catalog # AP60697

Specification

Anti-TCEAL1 Antibody - Product Information

Application	WB, IF
Primary Accession	O15170
Other Accession	O921P9
Reactivity	Human, Mouse, Rat, Bovine
Host	Rabbit
Clonality	Polyclonal
Calculated MW	18641

Anti-TCEAL1 Antibody - Additional Information

Gene ID 9338

Other Names

SIIR; Transcription elongation factor A protein-like 1; TCEA-like protein 1; Nuclear phosphoprotein p21/SIIR; Transcription elongation factor S-II protein-like 1

Target/Specificity

Recognizes endogenous levels of TCEAL1 protein.

Dilution

WB~~WB (1/500 - 1/1000), IH (1/100 - 1/200), IF/IC (1/100 - 1/500)
IF~~WB (1/500 - 1/1000), IH (1/100 - 1/200), IF/IC (1/100 - 1/500)

Format

Liquid in 0.42% Potassium phosphate, 0.87% Sodium chloride, pH 7.3, 30% glycerol, and 0.09% (W/V) sodium azide.

Storage

Store at -20 °C. Stable for 12 months from date of receipt

Anti-TCEAL1 Antibody - Protein Information

Name TCEAL1 ([HGNC:11616](#))

Synonyms SIIR

Function

May be involved in transcriptional regulation. Modulates various viral and cellular promoters in a promoter context-dependent manner. For example, transcription from the FOS promoter is increased, while Rous sarcoma virus (RSV) long terminal repeat (LTR) promoter activity is repressed. Does not bind DNA directly.

Cellular Location

Nucleus.

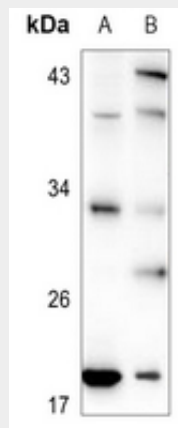
Tissue Location

Expressed in all tissues examined. Highly expressed in heart, ovary, prostate and skeletal muscle. Moderately expressed in brain, placenta, testis and small intestine. Weakly expressed in lung, liver and spleen. Expressed in several cancer cell lines

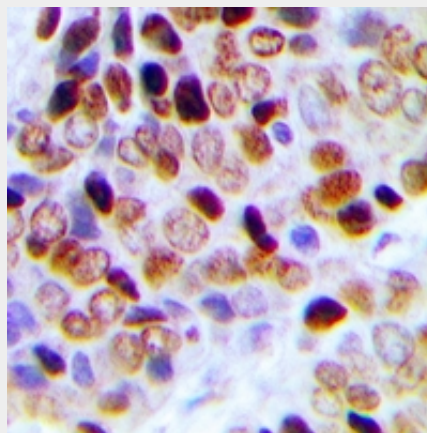
Anti-TCEAL1 Antibody - Protocols

Provided below are standard protocols that you may find useful for product applications.

- [Western Blot](#)
- [Blocking Peptides](#)
- [Dot Blot](#)
- [Immunohistochemistry](#)
- [Immunofluorescence](#)
- [Immunoprecipitation](#)
- [Flow Cytometry](#)
- [Cell Culture](#)

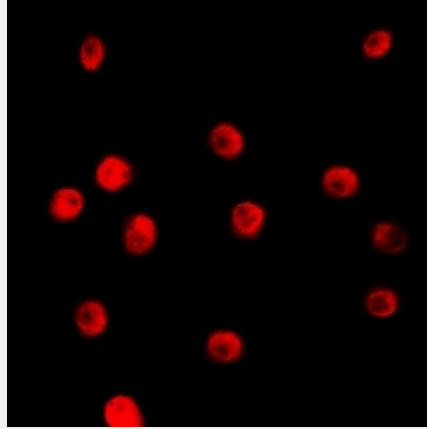
Anti-TCEAL1 Antibody - Images

Western blot analysis of TCEAL1 expression in PC3 (A), A2780 (B) whole cell lysates.



Immunohistochemical analysis of TCEAL1 staining in human prostate cancer formalin fixed

paraffin embedded tissue section. The section was pre-treated using heat mediated antigen retrieval with sodium citrate buffer (pH 6.0). The section was then incubated with the antibody at room temperature and detected using an HRP conjugated compact polymer system. DAB was used as the chromogen. The section was then counterstained with haematoxylin and mounted with DPX.



Immunofluorescent analysis of TCEAL1 staining in HepG2 cells. Formalin-fixed cells were permeabilized with 0.1% Triton X-100 in TBS for 5-10 minutes and blocked with 3% BSA-PBS for 30 minutes at room temperature. Cells were probed with the primary antibody in 3% BSA-PBS and incubated overnight at 4 °C in a humidified chamber. Cells were washed with PBST and incubated with a DyLight 594-conjugated secondary antibody (red) in PBS at room temperature in the dark.

Anti-TCEAL1 Antibody - Background

KLH-conjugated synthetic peptide encompassing a sequence within the center region of human TCEAL1. The exact sequence is proprietary.