

Anti-TTC23 Antibody
Rabbit polyclonal antibody to TTC23
Catalog # AP60690

Specification

Anti-TTC23 Antibody - Product Information

Application	WB
Primary Accession	Q5W5X9
Other Accession	Q8CHY7
Reactivity	Human, Mouse, Rat, Monkey
Host	Rabbit
Clonality	Polyclonal
Calculated MW	50009

Anti-TTC23 Antibody - Additional Information

Gene ID 64927

Other Names

Tetratricopeptide repeat protein 23; TPR repeat protein 23; Cervical cancer proto-oncogene 8 protein; HCC-8

Target/Specificity

Recognizes endogenous levels of TTC23 protein.

Dilution

WB~~WB (1/500 - 1/1000)

Format

Liquid in 0.42% Potassium phosphate, 0.87% Sodium chloride, pH 7.3, 30% glycerol, and 0.09% (W/V) sodium azide.

Storage

Store at -20 °C. Stable for 12 months from date of receipt

Anti-TTC23 Antibody - Protein Information

Name TTC23

Function

Participates positively in the ciliary Hedgehog (Hh) signaling.

Cellular Location

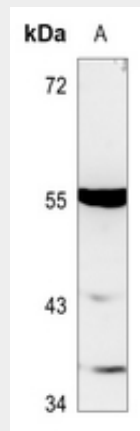
Cell projection, cilium {ECO:0000250|UniProtKB:Q8CHY7}. Note=Colocalizes with EVC and IQCE at the EvC zone of primary cilia. {ECO:0000250|UniProtKB:Q8CHY7}

Anti-TTC23 Antibody - Protocols

Provided below are standard protocols that you may find useful for product applications.

- [Western Blot](#)
- [Blocking Peptides](#)
- [Dot Blot](#)
- [Immunohistochemistry](#)
- [Immunofluorescence](#)
- [Immunoprecipitation](#)
- [Flow Cytometry](#)
- [Cell Culture](#)

Anti-TTC23 Antibody - Images



Western blot analysis of TTC23 expression in rat liver (A) whole cell lysates.

Anti-TTC23 Antibody - Background

KLH-conjugated synthetic peptide encompassing a sequence within the C-term region of human TTC23. The exact sequence is proprietary.