

**Anti-EP2 Antibody**  
Rabbit polyclonal antibody to EP2  
Catalog # AP60686**Specification**

---

**Anti-EP2 Antibody - Product Information**

Application	<b>WB, IF</b>
Primary Accession	<a href="#">P43116</a>
Other Accession	<a href="#">Q62053</a>
Reactivity	<b>Human, Mouse</b>
Host	<b>Rabbit</b>
Clonality	<b>Polyclonal</b>
Calculated MW	<b>39761</b>

**Anti-EP2 Antibody - Additional Information****Gene ID** 5732**Other Names**

Prostaglandin E2 receptor EP2 subtype; PGE receptor EP2 subtype; PGE2 receptor EP2 subtype; Prostanoid EP2 receptor

**Target/Specificity**

Recognizes endogenous levels of EP2 protein.

**Dilution**

WB~~WB (1/500 - 1/1000), IF/IC (1/100 - 1/500)

IF~~WB (1/500 - 1/1000), IF/IC (1/100 - 1/500)

**Format**

Liquid in 0.42% Potassium phosphate, 0.87% Sodium chloride, pH 7.3, 30% glycerol, and 0.09% (W/V) sodium azide.

**Storage**

Store at -20 °C. Stable for 12 months from date of receipt

**Anti-EP2 Antibody - Protein Information****Name** PTGER2**Function**

Receptor for prostaglandin E2 (PGE2). The activity of this receptor is mediated by G(s) proteins that stimulate adenylate cyclase. The subsequent raise in intracellular cAMP is responsible for the relaxing effect of this receptor on smooth muscle.

**Cellular Location**

Cell membrane; Multi-pass membrane protein.

## Tissue Location

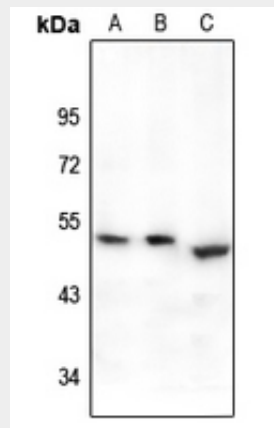
Placenta and lung.

## Anti-EP2 Antibody - Protocols

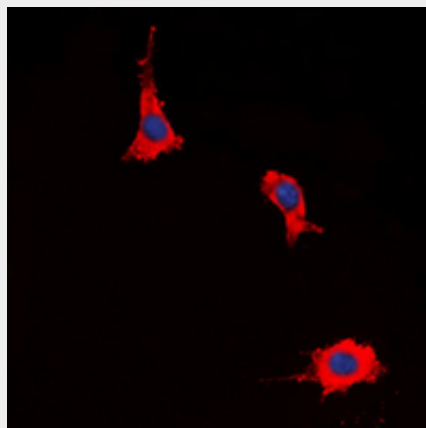
Provided below are standard protocols that you may find useful for product applications.

- [Western Blot](#)
- [Blocking Peptides](#)
- [Dot Blot](#)
- [Immunohistochemistry](#)
- [Immunofluorescence](#)
- [Immunoprecipitation](#)
- [Flow Cytometry](#)
- [Cell Culture](#)

## Anti-EP2 Antibody - Images



Western blot analysis of EP2 expression in A549 (A), HEK293T (B), mouse lung (C) whole cell lysates.



Immunofluorescent analysis of EP2 staining in HeLa cells. Formalin-fixed cells were permeabilized with 0.1% Triton X-100 in TBS for 5-10 minutes and blocked with 3% BSA-PBS for 30 minutes at room temperature. Cells were probed with the primary antibody in 3% BSA-PBS and incubated overnight at 4 °C in a humidified chamber. Cells were washed with PBST and incubated with a DyLight 594-conjugated secondary antibody (red) in PBS at room temperature in the dark. DAPI

was used to stain the cell nuclei (blue).

### **Anti-EP2 Antibody - Background**

KLH-conjugated synthetic peptide encompassing a sequence within the C-term region of human EP2. The exact sequence is proprietary.