

Anti-CD306 Antibody
Rabbit polyclonal antibody to CD306
Catalog # AP60679

Specification

Anti-CD306 Antibody - Product Information

Application	WB
Primary Accession	Q6ISS4
Reactivity	Human, Mouse, Rat
Host	Rabbit
Clonality	Polyclonal
Calculated MW	16280

Anti-CD306 Antibody - Additional Information

Gene ID 3904

Other Names

CD306; Leukocyte-associated immunoglobulin-like receptor 2; LAIR-2; CD306

Target/Specificity

Recognizes endogenous levels of CD306 protein.

Dilution

WB~~WB (1/500 - 1/1000)

Format

Liquid in 0.42% Potassium phosphate, 0.87% Sodium chloride, pH 7.3, 30% glycerol, and 0.09% (W/V) sodium azide.

Storage

Store at -20 °C. Stable for 12 months from date of receipt

Anti-CD306 Antibody - Protein Information

Name LAIR2

Synonyms CD306

Cellular Location

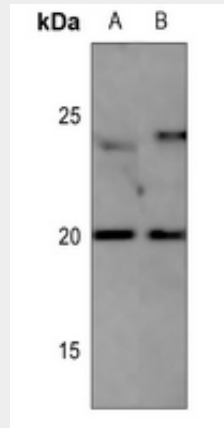
Secreted.

Anti-CD306 Antibody - Protocols

Provided below are standard protocols that you may find useful for product applications.

- [Western Blot](#)
- [Blocking Peptides](#)
- [Dot Blot](#)
- [Immunohistochemistry](#)
- [Immunofluorescence](#)
- [Immunoprecipitation](#)
- [Flow Cytometry](#)
- [Cell Culture](#)

Anti-CD306 Antibody - Images



Western blot analysis of CD306 expression in mouse spleen (A), rat spleen (B) whole cell lysates.

Anti-CD306 Antibody - Background

KLH-conjugated synthetic peptide encompassing a sequence within the center region of human CD306. The exact sequence is proprietary.