

Anti-L1CAM Antibody
Rabbit polyclonal antibody to L1CAM
Catalog # AP60678

Specification

Anti-L1CAM Antibody - Product Information

Application	WB, IF
Primary Accession	P32004
Other Accession	P11627
Reactivity	Human, Mouse, Rat, Zebrafish
Host	Rabbit
Clonality	Polyclonal
Calculated MW	140003

Anti-L1CAM Antibody - Additional Information

Gene ID 3897

Other Names

CAML1; MIC5; Neural cell adhesion molecule L1; N-CAM-L1; NCAM-L1; CD171

Target/Specificity

Recognizes endogenous levels of L1CAM protein.

Dilution

WB~~WB (1/500 - 1/1000), IF/IC (1/100 - 1/500)

IF~~WB (1/500 - 1/1000), IF/IC (1/100 - 1/500)

Format

Liquid in 0.42% Potassium phosphate, 0.87% Sodium chloride, pH 7.3, 30% glycerol, and 0.09% (W/V) sodium azide.

Storage

Store at -20 °C. Stable for 12 months from date of receipt

Anti-L1CAM Antibody - Protein Information

Name L1CAM

Synonyms CAML1, MIC5

Function

Neural cell adhesion molecule involved in the dynamics of cell adhesion and in the generation of transmembrane signals at tyrosine kinase receptors. During brain development, critical in multiple processes, including neuronal migration, axonal growth and fasciculation, and synaptogenesis. In the mature brain, plays a role in the dynamics of neuronal structure and function, including synaptic plasticity.

Cellular Location

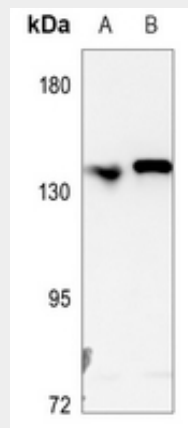
Cell membrane; Single-pass type I membrane protein {ECO:0000250|UniProtKB:Q05695}. Cell projection, growth cone {ECO:0000250|UniProtKB:Q05695}. Cell projection, axon. Cell projection, dendrite Note=Colocalized with SHTN1 in close apposition with actin filaments in filopodia and lamellipodia of axonal growth cones of hippocampal neurons (By similarity). In neurons, detected predominantly in axons and cell body, weak localization to dendrites (PubMed:20621658) {ECO:0000250|UniProtKB:Q05695, ECO:0000269|PubMed:20621658}

Anti-L1CAM Antibody - Protocols

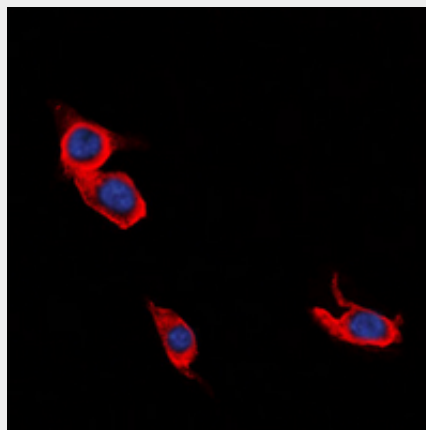
Provided below are standard protocols that you may find useful for product applications.

- [Western Blot](#)
- [Blocking Peptides](#)
- [Dot Blot](#)
- [Immunohistochemistry](#)
- [Immunofluorescence](#)
- [Immunoprecipitation](#)
- [Flow Cytometry](#)
- [Cell Culture](#)

Anti-L1CAM Antibody - Images



Western blot analysis of L1CAM expression in HEK293T (A), A549 (B) whole cell lysates.



Immunofluorescent analysis of L1CAM staining in Jurkat cells. Formalin-fixed cells were

permeabilized with 0.1% Triton X-100 in TBS for 5-10 minutes and blocked with 3% BSA-PBS for 30 minutes at room temperature. Cells were probed with the primary antibody in 3% BSA-PBS and incubated overnight at 4 °C in a humidified chamber. Cells were washed with PBST and incubated with a DyLight 594-conjugated secondary antibody (red) in PBS at room temperature in the dark. DAPI was used to stain the cell nuclei (blue).

Anti-L1CAM Antibody - Background

KLH-conjugated synthetic peptide encompassing a sequence within the C-term region of human L1CAM. The exact sequence is proprietary.