

**Anti-IL-6 Antibody**  
Rabbit polyclonal antibody to IL-6  
Catalog # AP60675

**Specification**

---

**Anti-IL-6 Antibody - Product Information**

Application	<b>WB</b>
Primary Accession	<a href="#">P05231</a>
Other Accession	<a href="#">P08505</a>
Reactivity	<b>Human, Mouse, Monkey</b>
Host	<b>Rabbit</b>
Clonality	<b>Polyclonal</b>
Calculated MW	<b>23718</b>

**Anti-IL-6 Antibody - Additional Information**

**Gene ID** 3569

**Other Names**

IFNB2; Interleukin-6; IL-6; B-cell stimulatory factor 2; BSF-2; CTL differentiation factor; CDF; Hybridoma growth factor; Interferon beta-2; IFN-beta-2

**Target/Specificity**

Recognizes endogenous levels of IL-6 protein.

**Dilution**

WB~~WB (1/500 - 1/1000), IH (1/50 - 1/200)

**Format**

Liquid in 0.42% Potassium phosphate, 0.87% Sodium chloride, pH 7.3, 30% glycerol, and 0.09% (W/V) sodium azide.

**Storage**

Store at -20 °C. Stable for 12 months from date of receipt

**Anti-IL-6 Antibody - Protein Information**

**Name** IL6 ([HGNC:6018](#))

**Synonyms** IFNB2

**Function**

Cytokine with a wide variety of biological functions in immunity, tissue regeneration, and metabolism. Binds to IL6R, then the complex associates to the signaling subunit IL6ST/gp130 to trigger the intracellular IL6-signaling pathway (Probable). The interaction with the membrane-bound IL6R and IL6ST stimulates 'classic signaling', whereas the binding of IL6 and soluble IL6R to IL6ST stimulates 'trans- signaling'. Alternatively, 'cluster signaling' occurs when membrane- bound IL6:IL6R complexes on transmitter cells activate IL6ST receptors on neighboring

receiver cells (Probable).

**Cellular Location**  
Secreted.

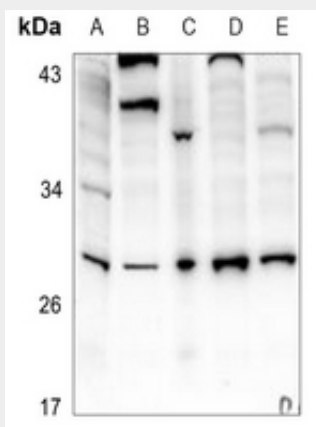
**Tissue Location**  
Produced by skeletal muscle.

### Anti-IL-6 Antibody - Protocols

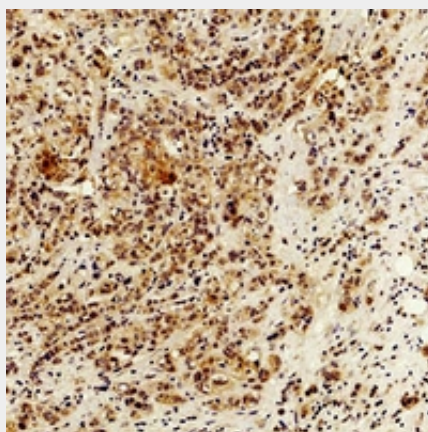
Provided below are standard protocols that you may find useful for product applications.

- [Western Blot](#)
- [Blocking Peptides](#)
- [Dot Blot](#)
- [Immunohistochemistry](#)
- [Immunofluorescence](#)
- [Immunoprecipitation](#)
- [Flow Cytometry](#)
- [Cell Culture](#)

### Anti-IL-6 Antibody - Images



Western blot analysis of IL-6 expression in Hela (A), U87MG (B), HuT78 (C), A549 (D), MCF7 (E) whole cell lysates.



Immunohistochemical analysis of IL-6 staining in human breast cancer formalin fixed paraffin embedded tissue section. The section was pre-treated using heat mediated antigen retrieval with sodium citrate buffer (pH 6.0). The section was then incubated with the antibody at room temperature and detected using an HRP conjugated compact polymer system. DAB was used as the chromogen. The section was then counterstained with haematoxylin and mounted with DPX.

#### **Anti-IL-6 Antibody - Background**

KLH-conjugated synthetic peptide encompassing a sequence within the center region of human IL-6. The exact sequence is proprietary.