

**Anti-FGF13 Antibody**  
Rabbit polyclonal antibody to FGF13  
Catalog # AP60669

**Specification**

---

**Anti-FGF13 Antibody - Product Information**

Application	WB
Primary Accession	<a href="#">O92913</a>
Other Accession	<a href="#">P70377</a>
Reactivity	Human, Mouse, Rat
Host	Rabbit
Clonality	Polyclonal
Calculated MW	27564

**Anti-FGF13 Antibody - Additional Information**

**Gene ID** 2258

**Other Names**

FHF2; Fibroblast growth factor 13; FGF-13; Fibroblast growth factor homologous factor 2; FHF-2

**Target/Specificity**

Recognizes endogenous levels of FGF13 protein.

**Dilution**

WB~~WB (1/500 - 1/1000)

**Format**

Liquid in 0.42% Potassium phosphate, 0.87% Sodium chloride, pH 7.3, 30% glycerol, and 0.09% (W/V) sodium azide.

**Storage**

Store at -20 °C. Stable for 12 months from date of receipt

**Anti-FGF13 Antibody - Protein Information**

**Name** FGF13 ([HGNC:3670](#))

**Synonyms** FHF2

**Function**

Microtubule-binding protein which directly binds tubulin and is involved in both polymerization and stabilization of microtubules (By similarity). Through its action on microtubules, may participate in the refinement of axons by negatively regulating axonal and leading processes branching (By similarity). Plays a crucial role in neuron polarization and migration in the cerebral cortex and the hippocampus (By similarity). Regulates voltage-gated sodium channel transport and function (PubMed: [15282281](http://www.uniprot.org/citations/15282281)), PubMed: [33245860](http://www.uniprot.org/citations/33245860)),

PubMed: <a href="http://www.uniprot.org/citations/36696443" target="\_blank">36696443</a>). May also play a role in MAPK signaling (By similarity). Required for the development of axonal initial segment-targeting inhibitory GABAergic synapses made by chandelier neurons (By similarity).

#### Cellular Location

[Isoform 1]: Nucleus [Isoform 3]: Cytoplasm. Nucleus [Isoform 5]: Cytoplasm {ECO:0000250|UniProtKB:P61329}. Nucleus {ECO:0000250|UniProtKB:P61329}

#### Tissue Location

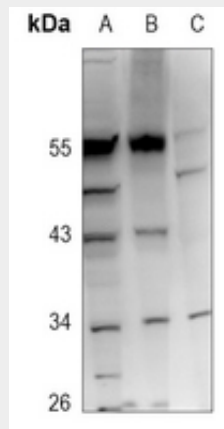
Ubiquitously expressed. Predominantly expressed in the nervous system.

### Anti-FGF13 Antibody - Protocols

Provided below are standard protocols that you may find useful for product applications.

- [Western Blot](#)
- [Blocking Peptides](#)
- [Dot Blot](#)
- [Immunohistochemistry](#)
- [Immunofluorescence](#)
- [Immunoprecipitation](#)
- [Flow Cytometry](#)
- [Cell Culture](#)

### Anti-FGF13 Antibody - Images



Western blot analysis of FGF13 expression in HeLa (A), H9C2 (B), rat spleen (C) whole cell lysates.

### Anti-FGF13 Antibody - Background

KLH-conjugated synthetic peptide encompassing a sequence within the center region of human FGF13. The exact sequence is proprietary.