

Anti-ELF1 Antibody
Rabbit polyclonal antibody to ELF1
Catalog # AP60666**Specification**

Anti-ELF1 Antibody - Product Information

Application	WB, IF
Primary Accession	P32519
Other Accession	Q60775
Reactivity	Human, Mouse
Host	Rabbit
Clonality	Polyclonal
Calculated MW	67498

Anti-ELF1 Antibody - Additional Information**Gene ID** 1997**Other Names**

ETS-related transcription factor Elf-1; E74-like factor 1

Target/Specificity

Recognizes endogenous levels of ELF1 protein.

Dilution

WB~~WB (1/500 - 1/1000), IH (1/100 - 1/200), IF/IC (1/100 - 1/500)

IF~~WB (1/500 - 1/1000), IH (1/100 - 1/200), IF/IC (1/100 - 1/500)

Format

Liquid in 0.42% Potassium phosphate, 0.87% Sodium chloride, pH 7.3, 30% glycerol, and 0.09% (W/V) sodium azide.

Storage

Store at -20 °C. Stable for 12 months from date of receipt

Anti-ELF1 Antibody - Protein Information**Name** ELF1**Function**

Transcription factor that activates the LYN and BLK promoters. Appears to be required for the T-cell-receptor-mediated trans activation of HIV-2 gene expression. Binds specifically to two purine-rich motifs in the HIV-2 enhancer.

Cellular Location

Nucleus.

Tissue Location

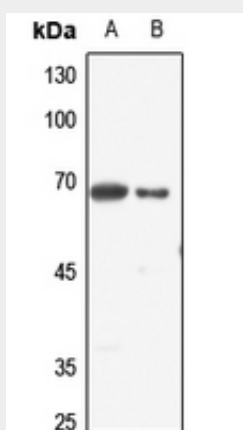
In fetal tissues, it is highly expressed in heart, lung liver and kidney, and weakly expressed in brain. In adult, it is highly expressed in pancreas, spleen, thymus and peripheral blood leukocytes, expressed at moderate levels in heart, placenta, lung, liver, skeletal muscle, kidney, prostate, ovary, small intestine and colon, and weakly expressed in brain and testis

Anti-ELF1 Antibody - Protocols

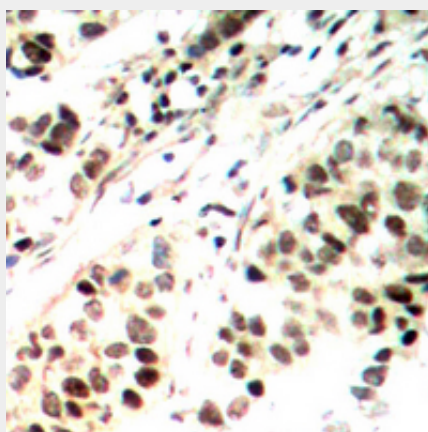
Provided below are standard protocols that you may find useful for product applications.

- [Western Blot](#)
- [Blocking Peptides](#)
- [Dot Blot](#)
- [Immunohistochemistry](#)
- [Immunofluorescence](#)
- [Immunoprecipitation](#)
- [Flow Cytometry](#)
- [Cell Culture](#)

Anti-ELF1 Antibody - Images

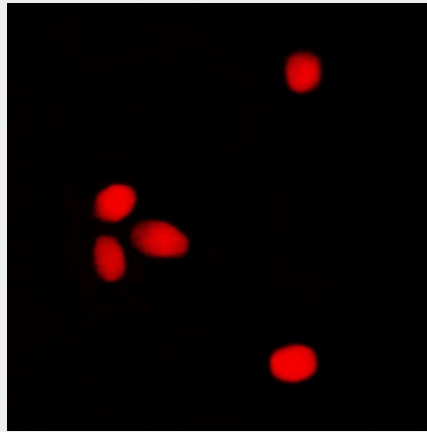


Western blot analysis of ELF1 expression in HEK293T (A), HGC27 (B) whole cell lysates.



Immunohistochemical analysis of ELF1 staining in human ovarian cancer formalin fixed paraffin embedded tissue section. The section was pre-treated using heat mediated antigen retrieval with sodium citrate buffer (pH 6.0). The section was then incubated with the antibody at room temperature and detected using an HRP conjugated compact polymer system. DAB was used as

the chromogen. The section was then counterstained with haematoxylin and mounted with DPX.



Immunofluorescent analysis of ELF1 staining in K562 cells. Formalin-fixed cells were permeabilized with 0.1% Triton X-100 in TBS for 5-10 minutes and blocked with 3% BSA-PBS for 30 minutes at room temperature. Cells were probed with the primary antibody in 3% BSA-PBS and incubated overnight at 4 °C in a humidified chamber. Cells were washed with PBST and incubated with a DyLight 594-conjugated secondary antibody (red) in PBS at room temperature in the dark.

Anti-ELF1 Antibody - Background

KLH-conjugated synthetic peptide encompassing a sequence within the C-term region of human ELF1. The exact sequence is proprietary.