

Anti-CD1d Antibody
Rabbit polyclonal antibody to CD1d
Catalog # AP60662

Specification

Anti-CD1d Antibody - Product Information

Application	WB
Primary Accession	P15813
Reactivity	Human
Host	Rabbit
Clonality	Polyclonal
Calculated MW	37717

Anti-CD1d Antibody - Additional Information

Gene ID 912

Other Names

Antigen-presenting glycoprotein CD1d; R3G1; CD1d

Target/Specificity

Recognizes endogenous levels of CD1d protein.

Dilution

WB~~WB (1/500 - 1/1000)

Format

Liquid in 0.42% Potassium phosphate, 0.87% Sodium chloride, pH 7.3, 30% glycerol, and 0.09% (W/V) sodium azide.

Storage

Store at -20 °C. Stable for 12 months from date of receipt

Anti-CD1d Antibody - Protein Information

Name CD1D

Function

Antigen-presenting protein that binds self and non-self glycolipids and presents them to T-cell receptors on natural killer T- cells.

Cellular Location

Cell membrane; Single-pass type I membrane protein. Basolateral cell membrane; Single-pass type I membrane protein. Endosome membrane; Single-pass type I membrane protein. Lysosome membrane; Single-pass type I membrane protein. Endoplasmic reticulum membrane; Single-pass type I membrane protein. Note=Subject to intracellular trafficking between the cell membrane, endosomes and lysosomes.

Tissue Location

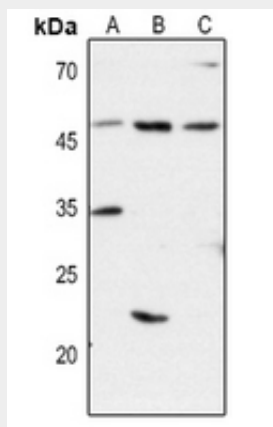
Expressed on cortical thymocytes, on certain T-cell leukemias, and in various other tissues

Anti-CD1d Antibody - Protocols

Provided below are standard protocols that you may find useful for product applications.

- [Western Blot](#)
- [Blocking Peptides](#)
- [Dot Blot](#)
- [Immunohistochemistry](#)
- [Immunofluorescence](#)
- [Immunoprecipitation](#)
- [Flow Cytometry](#)
- [Cell Culture](#)

Anti-CD1d Antibody - Images



Western blot analysis of CD1d expression in HEK293T (A), HeLa (B), H446 (C) whole cell lysates.

Anti-CD1d Antibody - Background

KLH-conjugated synthetic peptide encompassing a sequence within the center region of human CD1d. The exact sequence is proprietary.