

Anti-CCKAR Antibody
Rabbit polyclonal antibody to CCKAR
Catalog # AP60661**Specification**

Anti-CCKAR Antibody - Product Information

Application	WB, IF
Primary Accession	P32238
Reactivity	Human, Rat
Host	Rabbit
Clonality	Polyclonal
Calculated MW	47841

Anti-CCKAR Antibody - Additional Information**Gene ID** 886**Other Names**

CCKRA; Cholecystokinin receptor type A; CCK-A receptor; CCK-AR; Cholecystokinin-1 receptor; CCK1-R

Target/Specificity

Recognizes endogenous levels of CCKAR protein.

DilutionWB~~WB (1/500 - 1/1000), IF/IC (1/100 - 1/500), IP (1/10 - 1/100)
IF~~WB (1/500 - 1/1000), IF/IC (1/100 - 1/500), IP (1/10 - 1/100)**Format**

Liquid in 0.42% Potassium phosphate, 0.87% Sodium chloride, pH 7.3, 30% glycerol, and 0.09% (W/V) sodium azide.

Storage

Store at -20 °C. Stable for 12 months from date of receipt

Anti-CCKAR Antibody - Protein Information**Name** CCKAR**Synonyms** CCKRA**Function**

Receptor for cholecystokinin. Mediates pancreatic growth and enzyme secretion, smooth muscle contraction of the gall bladder and stomach. Has a 1000-fold higher affinity for CCK rather than for gastrin. It modulates feeding and dopamine-induced behavior in the central and peripheral nervous system. This receptor mediates its action by association with G proteins that activate a phosphatidylinositol-calcium second messenger system.

Cellular Location

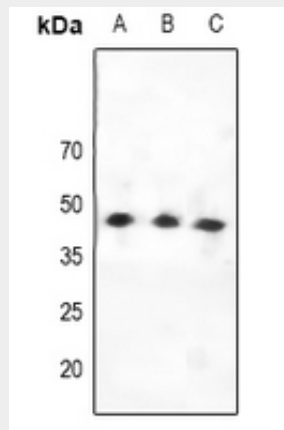
Cell membrane; Multi-pass membrane protein.

Anti-CCKAR Antibody - Protocols

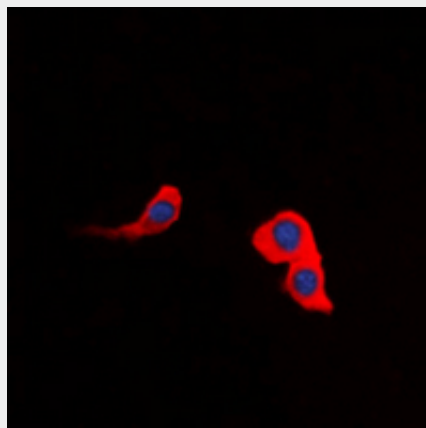
Provided below are standard protocols that you may find useful for product applications.

- [Western Blot](#)
- [Blocking Peptides](#)
- [Dot Blot](#)
- [Immunohistochemistry](#)
- [Immunofluorescence](#)
- [Immunoprecipitation](#)
- [Flow Cytometry](#)
- [Cell Culture](#)

Anti-CCKAR Antibody - Images



Western blot analysis of CCKAR expression in HEK293T (A), U87MG (B), K562 (C) whole cell lysates.



Immunofluorescent analysis of CCKAR staining in HeLa cells. Formalin-fixed cells were permeabilized with 0.1% Triton X-100 in TBS for 5-10 minutes and blocked with 3% BSA-PBS for 30 minutes at room temperature. Cells were probed with the primary antibody in 3% BSA-PBS and incubated overnight at 4 °C in a humidified chamber. Cells were washed with PBST and incubated with a DyLight 594-conjugated secondary antibody (red) in PBS at room temperature in the dark.

DAPI was used to stain the cell nuclei (blue).

Anti-CCKAR Antibody - Background

KLH-conjugated synthetic peptide encompassing a sequence within the center region of human CCKAR. The exact sequence is proprietary.