

Anti-ATP1A2 Antibody
Rabbit polyclonal antibody to ATP1A2
Catalog # AP60659

Specification

Anti-ATP1A2 Antibody - Product Information

Application	WB
Primary Accession	P50993
Other Accession	Q6PIE5
Reactivity	Human, Mouse, Rat, Monkey, Pig, Bovine
Host	Rabbit
Clonality	Polyclonal
Calculated MW	112265

Anti-ATP1A2 Antibody - Additional Information

Gene ID 477

Other Names

KIAA0778; Sodium/potassium-transporting ATPase subunit alpha-2; Na(+)/K(+) ATPase alpha-2 subunit; Sodium pump subunit alpha-2

Target/Specificity

Recognizes endogenous levels of ATP1A2 protein.

Dilution

WB~~WB (1/500 - 1/1000)

Format

Liquid in 0.42% Potassium phosphate, 0.87% Sodium chloride, pH 7.3, 30% glycerol, and 0.09% (W/V) sodium azide.

Storage

Store at -20 °C. Stable for 12 months from date of receipt

Anti-ATP1A2 Antibody - Protein Information

Name ATP1A2

Synonyms KIAA0778

Function

This is the catalytic component of the active enzyme, which catalyzes the hydrolysis of ATP coupled with the exchange of sodium and potassium ions across the plasma membrane. This action creates the electrochemical gradient of sodium and potassium, providing the energy for active transport of various nutrients.

Cellular Location

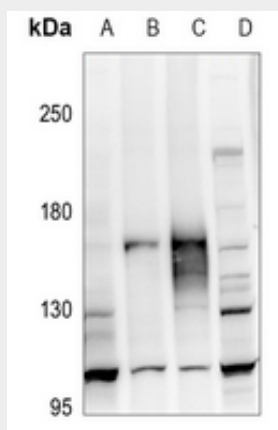
Membrane; Multi-pass membrane protein. Cell membrane; Multi-pass membrane protein

Anti-ATP1A2 Antibody - Protocols

Provided below are standard protocols that you may find useful for product applications.

- [Western Blot](#)
- [Blocking Peptides](#)
- [Dot Blot](#)
- [Immunohistochemistry](#)
- [Immunofluorescence](#)
- [Immunoprecipitation](#)
- [Flow Cytometry](#)
- [Cell Culture](#)

Anti-ATP1A2 Antibody - Images



Western blot analysis of ATP1A2 expression in HeLa (A), H1792 (B), Panc1 (C), AML12 (D) whole cell lysates.

Anti-ATP1A2 Antibody - Background

KLH-conjugated synthetic peptide encompassing a sequence within the C-term region of human ATP1A2. The exact sequence is proprietary.