

Anti-CD296 Antibody
Rabbit polyclonal antibody to CD296
Catalog # AP60658

Specification

Anti-CD296 Antibody - Product Information

Application	WB
Primary Accession	P52961
Other Accession	Q60935
Reactivity	Human, Mouse, Rat
Host	Rabbit
Clonality	Polyclonal
Calculated MW	36335

Anti-CD296 Antibody - Additional Information

Gene ID 417

Other Names

GPI-linked NAD(P)(+)-arginine ADP-ribosyltransferase 1; ADP-ribosyltransferase C2 and C3 toxin-like 1; ARTC1; Mono(ADP-ribosyl)transferase 1; CD296

Target/Specificity

Recognizes endogenous levels of CD296 protein.

Dilution

WB~~WB (1/500 - 1/1000)

Format

Liquid in 0.42% Potassium phosphate, 0.87% Sodium chloride, pH 7.3, 30% glycerol, and 0.09% (W/V) sodium azide.

Storage

Store at -20 °C. Stable for 12 months from date of receipt

Anti-CD296 Antibody - Protein Information

Name ART1

Function

Has ADP-ribosyltransferase activity toward GLP1R.

Cellular Location

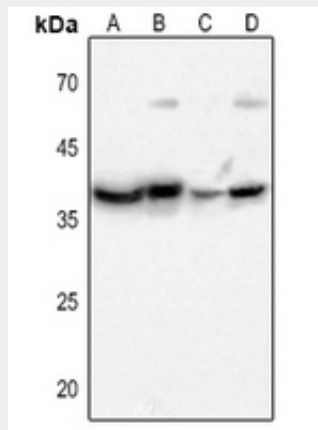
Sarcoplasmic reticulum membrane; Lipid-anchor, GPI-anchor

Anti-CD296 Antibody - Protocols

Provided below are standard protocols that you may find useful for product applications.

- [Western Blot](#)
- [Blocking Peptides](#)
- [Dot Blot](#)
- [Immunohistochemistry](#)
- [Immunofluorescence](#)
- [Immunoprecipitation](#)
- [Flow Cytometry](#)
- [Cell Culture](#)

Anti-CD296 Antibody - Images



Western blot analysis of CD296 expression in mouse muscle (A), mouse brain (B), rat muscle (C), rat brain (D) whole cell lysates.

Anti-CD296 Antibody - Background

KLH-conjugated synthetic peptide encompassing a sequence within the center region of human CD296. The exact sequence is proprietary.