

Anti-ZNF695 Antibody
Rabbit polyclonal antibody to ZNF695
Catalog # AP60655**Specification**

Anti-ZNF695 Antibody - Product Information

Application	WB
Primary Accession	Q8IW36
Reactivity	Human
Host	Rabbit
Clonality	Polyclonal
Calculated MW	60149

Anti-ZNF695 Antibody - Additional Information**Gene ID** 57116**Other Names**

Zinc finger protein 695; Zinc finger protein SBZF3

Target/Specificity

Recognizes endogenous levels of ZNF695 protein.

Dilution

WB~~WB (1/500 - 1/1000)

Format

Liquid in 0.42% Potassium phosphate, 0.87% Sodium chloride, pH 7.3, 30% glycerol, and 0.09% (W/V) sodium azide.

Storage

Store at -20 °C. Stable for 12 months from date of receipt

Anti-ZNF695 Antibody - Protein Information**Name** ZNF695**Function**

May be involved in transcriptional regulation.

Cellular Location

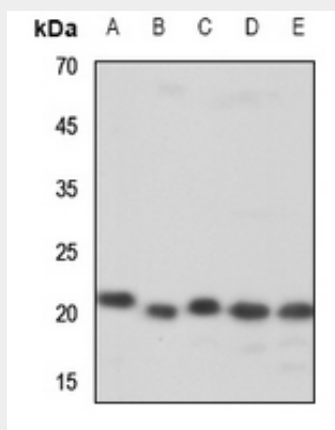
Nucleus.

Anti-ZNF695 Antibody - Protocols

Provided below are standard protocols that you may find useful for product applications.

- [Western Blot](#)
- [Blocking Peptides](#)
- [Dot Blot](#)
- [Immunohistochemistry](#)
- [Immunofluorescence](#)
- [Immunoprecipitation](#)
- [Flow Cytometry](#)
- [Cell Culture](#)

Anti-ZNF695 Antibody - Images



Western blot analysis of ZNF695 expression in HEK293T (A), HeLa (B), A2780 (C), A375 (D), DLD (E) whole cell lysates.

Anti-ZNF695 Antibody - Background

KLH-conjugated synthetic peptide encompassing a sequence within the center region of human ZNF695. The exact sequence is proprietary.