

Anti-Rabenosyn 5 Antibody
Rabbit polyclonal antibody to Rabenosyn 5
Catalog # AP60654

Specification

Anti-Rabenosyn 5 Antibody - Product Information

Application	WB
Primary Accession	O9H1K0
Other Accession	Q80Y56
Reactivity	Human, Mouse, Rat
Host	Rabbit
Clonality	Polyclonal
Calculated MW	88870

Anti-Rabenosyn 5 Antibody - Additional Information

Gene ID 64145

Other Names

Rabenosyn-5; 110 kDa protein; FYVE finger-containing Rab5 effector protein rabenosyn-5; Zinc finger FYVE domain-containing protein 20

Target/Specificity

Recognizes endogenous levels of Rabenosyn 5 protein.

Dilution

WB~~WB (1/500 - 1/1000)

Format

Liquid in 0.42% Potassium phosphate, 0.87% Sodium chloride, pH 7.3, 30% glycerol, and 0.09% (W/V) sodium azide.

Storage

Store at -20 °C. Stable for 12 months from date of receipt

Anti-Rabenosyn 5 Antibody - Protein Information

Name RBSN ([HGNC:20759](#))

Function

Rab4/Rab5 effector protein acting in early endocytic membrane fusion and membrane trafficking of recycling endosomes. Required for endosome fusion either homotypically or with clathrin coated vesicles. Plays a role in the lysosomal trafficking of CTSD/cathepsin D from the Golgi to lysosomes. Also promotes the recycling of transferrin directly from early endosomes to the plasma membrane. Binds phospholipid vesicles containing phosphatidylinositol 3-phosphate (PtdInsP3) (PubMed: [11062261](http://www.uniprot.org/citations/11062261), PubMed: [11788822](http://www.uniprot.org/citations/11788822), PubMed: [15020713](http://www.uniprot.org/citations/15020713)). Plays a role

in the recycling of transferrin receptor to the plasma membrane (PubMed:22308388).

Cellular Location

Cell membrane; Lipid-anchor; Cytoplasmic side. Early endosome membrane; Lipid-anchor

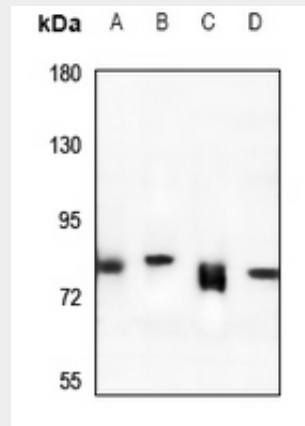
Note=Enriched in endosomes that are in close proximity to clathrin- enriched regions at the cell surface.

Anti-Rabenosyn 5 Antibody - Protocols

Provided below are standard protocols that you may find useful for product applications.

- [Western Blot](#)
- [Blocking Peptides](#)
- [Dot Blot](#)
- [Immunohistochemistry](#)
- [Immunofluorescence](#)
- [Immunoprecipitation](#)
- [Flow Cytometry](#)
- [Cell Culture](#)

Anti-Rabenosyn 5 Antibody - Images



Western blot analysis of Rabenosyn 5 expression in A549 (A), HeLa (B), BV2 (C), PMVEC (D) whole cell lysates.

Anti-Rabenosyn 5 Antibody - Background

KLH-conjugated synthetic peptide encompassing a sequence within the center region of human Rabenosyn 5. The exact sequence is proprietary.