

**Anti-TCF6 Antibody**  
Rabbit polyclonal antibody to TCF6  
Catalog # AP60642

**Specification**

---

**Anti-TCF6 Antibody - Product Information**

Application	<b>WB, IF</b>
Primary Accession	<a href="#">Q00059</a>
Reactivity	<b>Human, Rat</b>
Host	<b>Rabbit</b>
Clonality	<b>Polyclonal</b>
Calculated MW	<b>29097</b>

**Anti-TCF6 Antibody - Additional Information**

**Gene ID** 7019

**Other Names**

TCF6; TCF6L2; Transcription factor A mitochondrial; mtTFA; Mitochondrial transcription factor 1; MtTF1; Transcription factor 6; TCF-6; Transcription factor 6-like 2

**Target/Specificity**

Recognizes endogenous levels of TCF6 protein.

**Dilution**

WB~~WB (1/500 - 1/1000), IH (1/100 - 1/200), IF/IC (1/100 - 1/500)  
IF~~WB (1/500 - 1/1000), IH (1/100 - 1/200), IF/IC (1/100 - 1/500)

**Format**

Liquid in 0.42% Potassium phosphate, 0.87% Sodium chloride, pH 7.3, 30% glycerol, and 0.09% (W/V) sodium azide.

**Storage**

Store at -20 °C. Stable for 12 months from date of receipt

**Anti-TCF6 Antibody - Protein Information**

**Name** TFAM ([HGNC:11741](#))

**Synonyms** TCF6, TCF6L2

**Function**

Binds to the mitochondrial light strand promoter and functions in mitochondrial transcription regulation (PubMed: [29445193](http://www.uniprot.org/citations/29445193), PubMed: [32183942](http://www.uniprot.org/citations/32183942)). Component of the mitochondrial transcription initiation complex, composed at least of TFB2M, TFAM and POLRMT that is required for basal transcription of mitochondrial DNA (PubMed: [29149603](http://www.uniprot.org/citations/29149603))

target="\_blank">29149603</a>). In this complex, TFAM recruits POLRMT to a specific promoter whereas TFB2M induces structural changes in POLRMT to enable promoter opening and trapping of the DNA non-template strand (PubMed:<a href="http://www.uniprot.org/citations/20410300" target="\_blank">20410300</a>). Required for accurate and efficient promoter recognition by the mitochondrial RNA polymerase (PubMed:<a href="http://www.uniprot.org/citations/22037172" target="\_blank">22037172</a>). Promotes transcription initiation from the HSP1 and the light strand promoter by binding immediately upstream of transcriptional start sites (PubMed:<a href="http://www.uniprot.org/citations/22037172" target="\_blank">22037172</a>). Is able to unwind DNA (PubMed:<a href="http://www.uniprot.org/citations/22037172" target="\_blank">22037172</a>). Bends the mitochondrial light strand promoter DNA into a U-turn shape via its HMG boxes (PubMed:<a href="http://www.uniprot.org/citations/1737790" target="\_blank">1737790</a>). Required for maintenance of normal levels of mitochondrial DNA (PubMed:<a href="http://www.uniprot.org/citations/19304746" target="\_blank">19304746</a>, PubMed:<a href="http://www.uniprot.org/citations/22841477" target="\_blank">22841477</a>). May play a role in organizing and compacting mitochondrial DNA (PubMed:<a href="http://www.uniprot.org/citations/22037171" target="\_blank">22037171</a>).

### Cellular Location

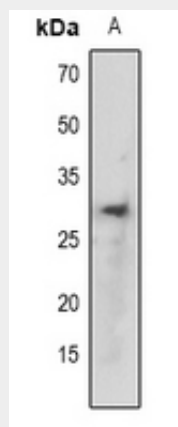
Mitochondrion. Mitochondrion matrix, mitochondrion nucleoid

### Anti-TCF6 Antibody - Protocols

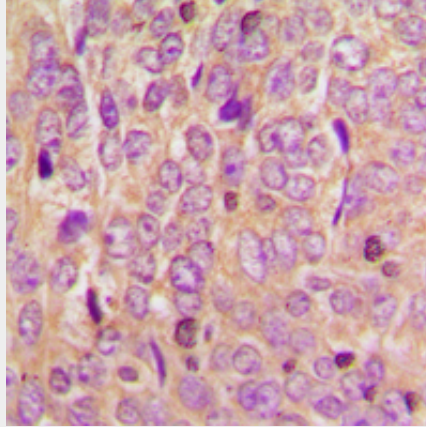
Provided below are standard protocols that you may find useful for product applications.

- [Western Blot](#)
- [Blocking Peptides](#)
- [Dot Blot](#)
- [Immunohistochemistry](#)
- [Immunofluorescence](#)
- [Immunoprecipitation](#)
- [Flow Cytometry](#)
- [Cell Culture](#)

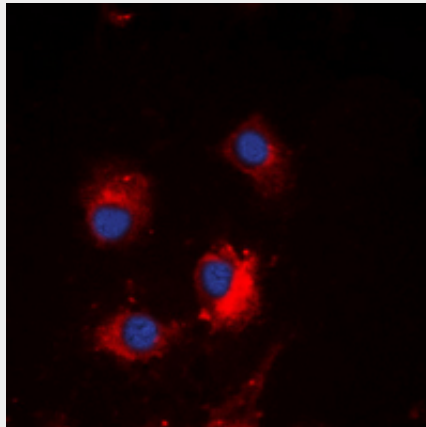
### Anti-TCF6 Antibody - Images



Western blot analysis of TCF6 expression in rat liver (A) whole cell lysates.



Immunohistochemical analysis of TCF6 staining in human breast cancer formalin fixed paraffin embedded tissue section. The section was pre-treated using heat mediated antigen retrieval with sodium citrate buffer (pH 6.0). The section was then incubated with the antibody at room temperature and detected using an HRP conjugated compact polymer system. DAB was used as the chromogen. The section was then counterstained with haematoxylin and mounted with DPX.



Immunofluorescent analysis of TCF6 staining in U2OS cells. Formalin-fixed cells were permeabilized with 0.1% Triton X-100 in TBS for 5-10 minutes and blocked with 3% BSA-PBS for 30 minutes at room temperature. Cells were probed with the primary antibody in 3% BSA-PBS and incubated overnight at 4 °C in a humidified chamber. Cells were washed with PBST and incubated with a DyLight 594-conjugated secondary antibody (red) in PBS at room temperature in the dark. DAPI was used to stain the cell nuclei (blue).

#### **Anti-TCF6 Antibody - Background**

KLH-conjugated synthetic peptide encompassing a sequence within the center region of human TCF6. The exact sequence is proprietary.