

Anti-RB3 Antibody
Rabbit polyclonal antibody to RB3
Catalog # AP60639

Specification

Anti-RB3 Antibody - Product Information

Application	WB
Primary Accession	O9H169
Other Accession	P63042
Reactivity	Human, Mouse, Rat
Host	Rabbit
Clonality	Polyclonal
Calculated MW	22071

Anti-RB3 Antibody - Additional Information

Gene ID 81551

Other Names

Stathmin-4; Stathmin-like protein B3; RB3

Target/Specificity

Recognizes endogenous levels of RB3 protein.

Dilution

WB~~WB (1/500 - 1/1000), IH (1/100 - 1/200)

Format

Liquid in 0.42% Potassium phosphate, 0.87% Sodium chloride, pH 7.3, 30% glycerol, and 0.09% (W/V) sodium azide.

Storage

Store at -20 °C. Stable for 12 months from date of receipt

Anti-RB3 Antibody - Protein Information

Name STMN4

Function

Exhibits microtubule-destabilizing activity.

Cellular Location

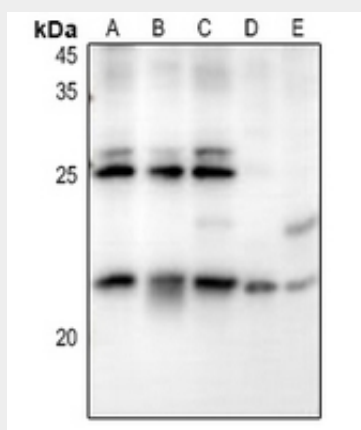
Golgi apparatus. Cell projection, growth cone. Cell projection, axon

Anti-RB3 Antibody - Protocols

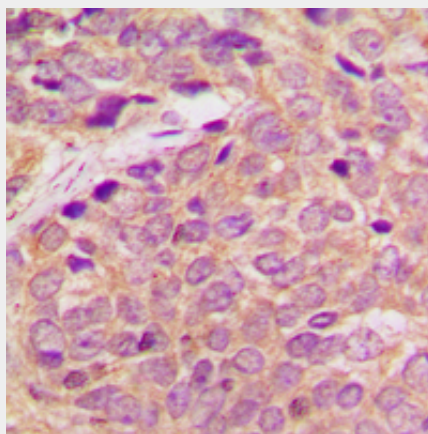
Provided below are standard protocols that you may find useful for product applications.

- [Western Blot](#)
- [Blocking Peptides](#)
- [Dot Blot](#)
- [Immunohistochemistry](#)
- [Immunofluorescence](#)
- [Immunoprecipitation](#)
- [Flow Cytometry](#)
- [Cell Culture](#)

Anti-RB3 Antibody - Images



Western blot analysis of RB3 expression in COS7 (A), MCF7 (B), A549 (C), CT26 (D), PC12 (E) whole cell lysates.



Immunohistochemical analysis of RB3 staining in human breast cancer formalin fixed paraffin embedded tissue section. The section was pre-treated using heat mediated antigen retrieval with sodium citrate buffer (pH 6.0). The section was then incubated with the antibody at room temperature and detected using an HRP conjugated compact polymer system. DAB was used as the chromogen. The section was then counterstained with haematoxylin and mounted with DPX.

Anti-RB3 Antibody - Background

KLH-conjugated synthetic peptide encompassing a sequence within the C-term region of human RB3. The exact sequence is proprietary.