

**Anti-LKB1 (pT189) Antibody**  
Rabbit polyclonal antibody to LKB1 (pT189)  
Catalog # AP60638

**Specification**

---

**Anti-LKB1 (pT189) Antibody - Product Information**

Application	WB
Primary Accession	<a href="#">O15831</a>
Other Accession	<a href="#">O9WTK7</a>
Reactivity	Human, Mouse, Rat, Chicken
Host	Rabbit
Clonality	Polyclonal
Calculated MW	48636

**Anti-LKB1 (pT189) Antibody - Additional Information**

**Gene ID** 6794

**Other Names**

LKB1; PJS; Serine/threonine-protein kinase STK11; Liver kinase B1; LKB1; hLKB1; Renal carcinoma antigen NY-REN-19

**Target/Specificity**

Recognizes endogenous levels of LKB1 (pT189) protein.

**Dilution**

WB~~WB (1/500 - 1/1000)

**Format**

Liquid in 0.42% Potassium phosphate, 0.87% Sodium chloride, pH 7.3, 30% glycerol, and 0.09% (W/V) sodium azide.

**Storage**

Store at -20 °C. Stable for 12 months from date of receipt

**Anti-LKB1 (pT189) Antibody - Protein Information**

**Name** STK11 ([HGNC:11389](#))

**Synonyms** LKB1, PJS

**Function**

Tumor suppressor serine/threonine-protein kinase that controls the activity of AMP-activated protein kinase (AMPK) family members, thereby playing a role in various processes such as cell metabolism, cell polarity, apoptosis and DNA damage response. Acts by phosphorylating the T-loop of AMPK family proteins, thus promoting their activity: phosphorylates PRKAA1, PRKAA2, BRSK1, BRSK2, MARK1, MARK2, MARK3, MARK4, NUAK1, NUAK2, SIK1, SIK2, SIK3 and SNRK but not MELK. Also phosphorylates non-AMPK family proteins such as STRADA, PTEN and possibly

p53/TP53. Acts as a key upstream regulator of AMPK by mediating phosphorylation and activation of AMPK catalytic subunits PRKAA1 and PRKAA2 and thereby regulates processes including: inhibition of signaling pathways that promote cell growth and proliferation when energy levels are low, glucose homeostasis in liver, activation of autophagy when cells undergo nutrient deprivation, and B-cell differentiation in the germinal center in response to DNA damage. Also acts as a regulator of cellular polarity by remodeling the actin cytoskeleton. Required for cortical neuron polarization by mediating phosphorylation and activation of BRSK1 and BRSK2, leading to axon initiation and specification. Involved in DNA damage response: interacts with p53/TP53 and recruited to the CDKN1A/WAF1 promoter to participate in transcription activation. Able to phosphorylate p53/TP53; the relevance of such result in vivo is however unclear and phosphorylation may be indirect and mediated by downstream STK11/LKB1 kinase NUA1. Also acts as a mediator of p53/TP53-dependent apoptosis via interaction with p53/TP53: translocates to the mitochondrion during apoptosis and regulates p53/TP53-dependent apoptosis pathways. Regulates UV radiation-induced DNA damage response mediated by CDKN1A. In association with NUA1, phosphorylates CDKN1A in response to UV radiation and contributes to its degradation which is necessary for optimal DNA repair (PubMed:<a href="http://www.uniprot.org/citations/25329316" target="\_blank">25329316</a>).

#### Cellular Location

Nucleus. Cytoplasm. Membrane. Mitochondrion. Note=A small fraction localizes at membranes (By similarity). Relocates to the cytoplasm when bound to STRAD (STRADA or STRADB) and CAB39/MO25 (CAB39/MO25alpha or CAB39L/MO25beta) Translocates to the mitochondrion during apoptosis. PTEN promotes cytoplasmic localization.

#### Tissue Location

Ubiquitously expressed. Strongest expression in testis and fetal liver

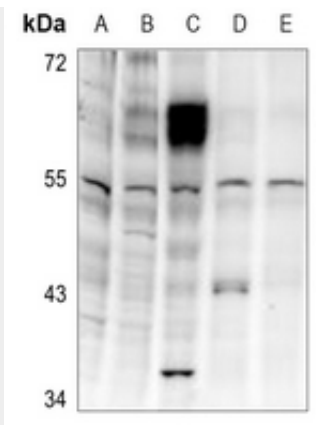
### Anti-LKB1 (pT189) Antibody - Protocols

Provided below are standard protocols that you may find useful for product applications.

- [Western Blot](#)
- [Blocking Peptides](#)
- [Dot Blot](#)
- [Immunohistochemistry](#)
- [Immunofluorescence](#)
- [Immunoprecipitation](#)
- [Flow Cytometry](#)
- [Cell Culture](#)

### Anti-LKB1 (pT189) Antibody - Images





Western blot analysis of LKB1 (pT189) expression in AML12 (A), PC12 (B), A375 (C), Panc1 (D), SHSY5Y (E) whole cell lysates.

#### **Anti-LKB1 (pT189) Antibody - Background**

KLH-conjugated synthetic peptide encompassing a sequence within the center region of human LKB1. The exact sequence is proprietary.