

**Anti-STAM2 Antibody**  
Rabbit polyclonal antibody to STAM2  
Catalog # AP60637

## Specification

---

### Anti-STAM2 Antibody - Product Information

Application	WB, IF
Primary Accession	<a href="#">O75886</a>
Other Accession	<a href="#">O88811</a>
Reactivity	Human, Mouse, Rat
Host	Rabbit
Clonality	Polyclonal
Calculated MW	58164

### Anti-STAM2 Antibody - Additional Information

Gene ID 10254

#### Other Names

HBP; Signal transducing adapter molecule 2; STAM-2; Hrs-binding protein

#### Target/Specificity

Recognizes endogenous levels of STAM2 protein.

#### Dilution

WB~~WB (1/500 - 1/1000), IH (1/100 - 1/200), IF/IC (1/100 - 1/500)

IF~~WB (1/500 - 1/1000), IH (1/100 - 1/200), IF/IC (1/100 - 1/500)

#### Format

Liquid in 0.42% Potassium phosphate, 0.87% Sodium chloride, pH 7.3, 30% glycerol, and 0.09% (W/V) sodium azide.

#### Storage

Store at -20 °C. Stable for 12 months from date of receipt

### Anti-STAM2 Antibody - Protein Information

Name STAM2

Synonyms HBP

#### Function

Involved in intracellular signal transduction mediated by cytokines and growth factors. Upon IL-2 and GM-CSL stimulation, it plays a role in signaling leading to DNA synthesis and MYC induction. May also play a role in T-cell development. Involved in down-regulation of receptor tyrosine kinase via multivesicular body (MVBs) when complexed with HGS (ESCRT-0 complex). The ESCRT-0 complex binds ubiquitin and acts as a sorting machinery that recognizes ubiquitinated receptors and transfers them to further sequential lysosomal sorting/trafficking processes (By similarity).

**Cellular Location**

Cytoplasm. Early endosome membrane; Peripheral membrane protein; Cytoplasmic side

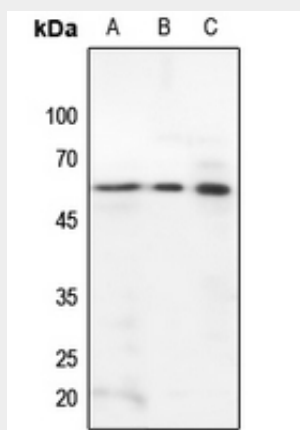
**Tissue Location**

Ubiquitously expressed.

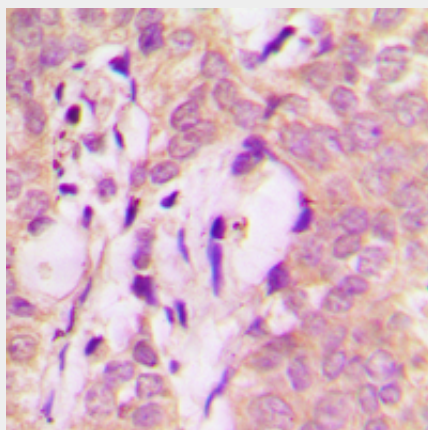
**Anti-STAM2 Antibody - Protocols**

Provided below are standard protocols that you may find useful for product applications.

- [Western Blot](#)
- [Blocking Peptides](#)
- [Dot Blot](#)
- [Immunohistochemistry](#)
- [Immunofluorescence](#)
- [Immunoprecipitation](#)
- [Flow Cytometry](#)
- [Cell Culture](#)

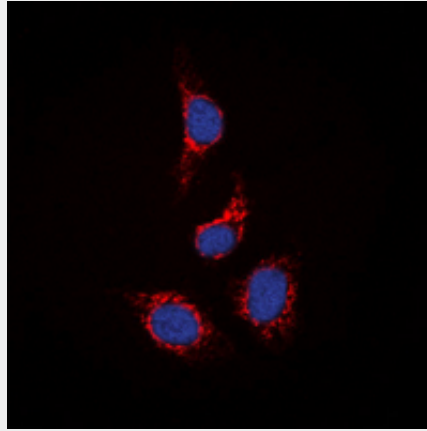
**Anti-STAM2 Antibody - Images**

Western blot analysis of STAM2 expression in HEK293T (A), mouse kidney (B), rat kidney (C) whole cell lysates.



Immunohistochemical analysis of STAM2 staining in human breast cancer formalin fixed paraffin embedded tissue section. The section was pre-treated using heat mediated antigen retrieval with

sodium citrate buffer (pH 6.0). The section was then incubated with the antibody at room temperature and detected using an HRP conjugated compact polymer system. DAB was used as the chromogen. The section was then counterstained with haematoxylin and mounted with DPX.



Immunofluorescent analysis of STAM2 staining in HepG2 cells. Formalin-fixed cells were permeabilized with 0.1% Triton X-100 in TBS for 5-10 minutes and blocked with 3% BSA-PBS for 30 minutes at room temperature. Cells were probed with the primary antibody in 3% BSA-PBS and incubated overnight at 4 °C in a humidified chamber. Cells were washed with PBST and incubated with a DyLight 594-conjugated secondary antibody (red) in PBS at room temperature in the dark. DAPI was used to stain the cell nuclei (blue).

#### **Anti-STAM2 Antibody - Background**

KLH-conjugated synthetic peptide encompassing a sequence within the center region of human STAM2. The exact sequence is proprietary.