

Anti-SSTR1 Antibody
Rabbit polyclonal antibody to SSTR1
Catalog # AP60636

Specification

Anti-SSTR1 Antibody - Product Information

Application	WB, IF
Primary Accession	P30872
Other Accession	P30873
Reactivity	Human, Mouse, Rat, Monkey, Dog
Host	Rabbit
Clonality	Polyclonal
Calculated MW	42686

Anti-SSTR1 Antibody - Additional Information

Gene ID 6751

Other Names

Somatostatin receptor type 1; SS-1-R; SS1-R; SS1R; SRIF-2

Target/Specificity

Recognizes endogenous levels of SSTR1 protein.

Dilution

WB~~WB (1/500 - 1/1000), IF/IC (1/100 - 1/500)

IF~~WB (1/500 - 1/1000), IF/IC (1/100 - 1/500)

Format

Liquid in 0.42% Potassium phosphate, 0.87% Sodium chloride, pH 7.3, 30% glycerol, and 0.09% (W/V) sodium azide.

Storage

Store at -20 °C. Stable for 12 months from date of receipt

Anti-SSTR1 Antibody - Protein Information

Name SSTR1

Function

Receptor for somatostatin with higher affinity for somatostatin-14 than -28. This receptor is coupled via pertussis toxin sensitive G proteins to inhibition of adenylyl cyclase. In addition it stimulates phosphotyrosine phosphatase and Na(+)/H(+) exchanger via pertussis toxin insensitive G proteins.

Cellular Location

Cell membrane; Multi-pass membrane protein.

Tissue Location

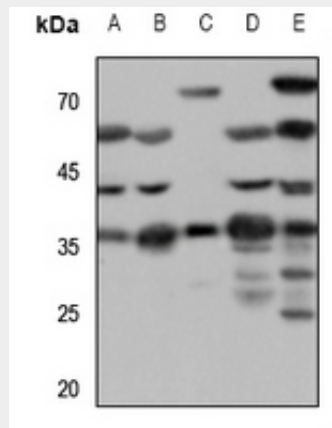
Fetal kidney, fetal liver, and adult pancreas, brain, lung, jejunum and stomach

Anti-SSTR1 Antibody - Protocols

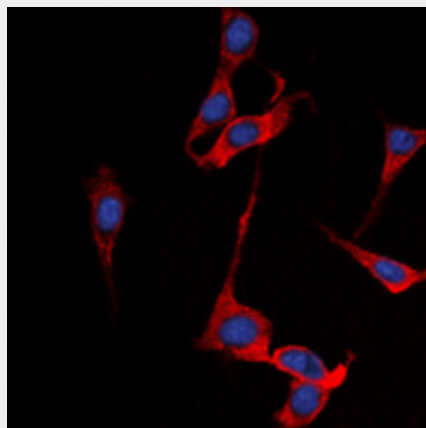
Provided below are standard protocols that you may find useful for product applications.

- [Western Blot](#)
- [Blocking Peptides](#)
- [Dot Blot](#)
- [Immunohistochemistry](#)
- [Immunofluorescence](#)
- [Immunoprecipitation](#)
- [Flow Cytometry](#)
- [Cell Culture](#)

Anti-SSTR1 Antibody - Images



Western blot analysis of SSTR1 expression in mouse lung (A), mouse heart (B), mouse liver (C), rat heart (D), rat liver (E) whole cell lysates.



Immunofluorescent analysis of SSTR1 staining in A549 cells. Formalin-fixed cells were permeabilized with 0.1% Triton X-100 in TBS for 5-10 minutes and blocked with 3% BSA-PBS for 30 minutes at room temperature. Cells were probed with the primary antibody in 3% BSA-PBS and incubated overnight at 4 °C in a humidified chamber. Cells were washed with PBST and incubated with a DyLight 594-conjugated secondary antibody (red) in PBS at room temperature in the dark.

DAPI was used to stain the cell nuclei (blue).

Anti-SSTR1 Antibody - Background

KLH-conjugated synthetic peptide encompassing a sequence within the N-term region of human SSTR1. The exact sequence is proprietary.