

Anti-Lupus La Antibody
Rabbit polyclonal antibody to Lupus La
Catalog # AP60635

Specification

Anti-Lupus La Antibody - Product Information

Application	WB, IH
Primary Accession	P05455
Reactivity	Human
Host	Rabbit
Clonality	Polyclonal
Calculated MW	46837

Anti-Lupus La Antibody - Additional Information

Gene ID 6741

Other Names

Lupus La protein; La autoantigen; La ribonucleoprotein; Sjogren syndrome type B antigen; SS-B

Target/Specificity

Recognizes endogenous levels of Lupus La protein.

Dilution

WB~~WB (1/500 - 1/1000), IH (1/100 - 1/200)

IH~~WB (1/500 - 1/1000), IH (1/100 - 1/200)

Format

Liquid in 0.42% Potassium phosphate, 0.87% Sodium chloride, pH 7.3, 30% glycerol, and 0.09% (W/V) sodium azide.

Storage

Store at -20 °C. Stable for 12 months from date of receipt

Anti-Lupus La Antibody - Protein Information

Name SSB

Function

Binds to the 3' poly(U) terminus of nascent RNA polymerase III transcripts, protecting them from exonuclease digestion and facilitating their folding and maturation (PubMed: [2470590](http://www.uniprot.org/citations/2470590), PubMed: [3192525](http://www.uniprot.org/citations/3192525)). In case of Coxsackievirus B3 infection, binds to the viral internal ribosome entry site (IRES) and stimulates the IRES- mediated translation (PubMed: [12384597](http://www.uniprot.org/citations/12384597)).

Cellular Location

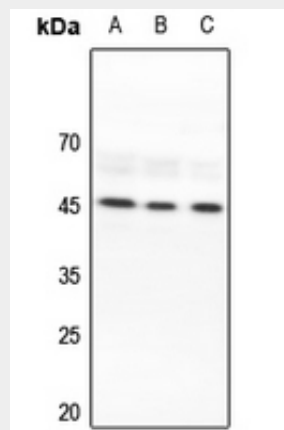
Nucleus.

Anti-Lupus La Antibody - Protocols

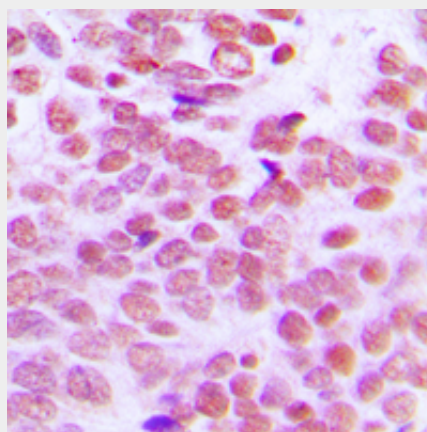
Provided below are standard protocols that you may find useful for product applications.

- [Western Blot](#)
- [Blocking Peptides](#)
- [Dot Blot](#)
- [Immunohistochemistry](#)
- [Immunofluorescence](#)
- [Immunoprecipitation](#)
- [Flow Cytometry](#)
- [Cell Culture](#)

Anti-Lupus La Antibody - Images



Western blot analysis of Lupus La expression in HEK293T (A), HeLa (B), H1688 (C) whole cell lysates.



Immunohistochemical analysis of Lupus La staining in human prostate cancer formalin fixed paraffin embedded tissue section. The section was pre-treated using heat mediated antigen retrieval with sodium citrate buffer (pH 6.0). The section was then incubated with the antibody at room temperature and detected using an HRP conjugated compact polymer system. DAB was used as the chromogen. The section was then counterstained with haematoxylin and mounted with DPX.

Anti-Lupus La Antibody - Background

KLH-conjugated synthetic peptide encompassing a sequence within the C-term region of human Lupus La. The exact sequence is proprietary.