

Anti-MCT14 Antibody
Rabbit polyclonal antibody to MCT14
Catalog # AP60633**Specification**

Anti-MCT14 Antibody - Product Information

Application	WB
Primary Accession	O7RTX9
Other Accession	O8K1C7
Reactivity	Human, Mouse, Rat
Host	Rabbit
Clonality	Polyclonal
Calculated MW	56254

Anti-MCT14 Antibody - Additional Information**Gene ID** 151473**Other Names**

MCT14; Monocarboxylate transporter 14; MCT 14; Solute carrier family 16 member 14

Target/Specificity

Recognizes endogenous levels of MCT14 protein.

Dilution

WB~~WB (1/500 - 1/1000)

Format

Liquid in 0.42% Potassium phosphate, 0.87% Sodium chloride, pH 7.3, 30% glycerol, and 0.09% (W/V) sodium azide.

Storage

Store at -20 °C. Stable for 12 months from date of receipt

Anti-MCT14 Antibody - Protein Information**Name** SLC16A14**Synonyms** MCT14**Function**

Proton-linked monocarboxylate transporter. May catalyze the transport of monocarboxylates across the plasma membrane.

Cellular Location

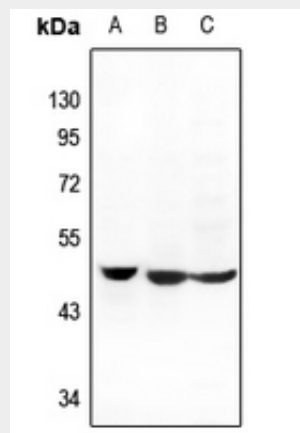
Cell membrane; Multi-pass membrane protein

Anti-MCT14 Antibody - Protocols

Provided below are standard protocols that you may find useful for product applications.

- [Western Blot](#)
- [Blocking Peptides](#)
- [Dot Blot](#)
- [Immunohistochemistry](#)
- [Immunofluorescence](#)
- [Immunoprecipitation](#)
- [Flow Cytometry](#)
- [Cell Culture](#)

Anti-MCT14 Antibody - Images



Western blot analysis of MCT14 expression in PC12 (A), HeLa (B), HEK293T (C) whole cell lysates.

Anti-MCT14 Antibody - Background

KLH-conjugated synthetic peptide encompassing a sequence within the center region of human MCT14. The exact sequence is proprietary.