

Anti-PEDF Antibody
Rabbit polyclonal antibody to PEDF
Catalog # AP60630**Specification**

Anti-PEDF Antibody - Product Information

Application	WB
Primary Accession	P36955
Other Accession	P97298
Reactivity	Human, Mouse, Rat, Monkey, Pig, Bovine
Host	Rabbit
Clonality	Polyclonal
Calculated MW	46312

Anti-PEDF Antibody - Additional Information**Gene ID** 5176**Other Names**

PEDF; Pigment epithelium-derived factor; PEDF; Cell proliferation-inducing gene 35 protein; EPC-1; Serpin F1

Target/Specificity

Recognizes endogenous levels of PEDF protein.

Dilution

WB~~WB (1/500 - 1/1000)

Format

Liquid in 0.42% Potassium phosphate, 0.87% Sodium chloride, pH 7.3, 30% glycerol, and 0.09% (W/V) sodium azide.

Storage

Store at -20 °C. Stable for 12 months from date of receipt

Anti-PEDF Antibody - Protein Information**Name** SERPINF1**Synonyms** PEDF**Function**

Neurotrophic protein; induces extensive neuronal differentiation in retinoblastoma cells. Potent inhibitor of angiogenesis. As it does not undergo the S (stressed) to R (relaxed) conformational transition characteristic of active serpins, it exhibits no serine protease inhibitory activity.

Cellular Location

Secreted. Melanosome. Note=Enriched in stage I melanosomes

Tissue Location

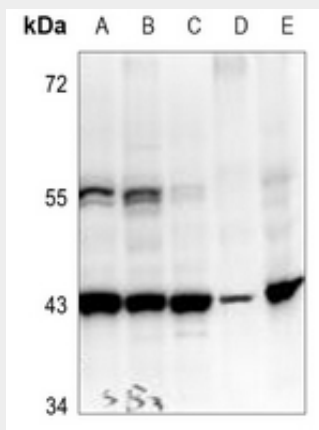
Retinal pigment epithelial cells and blood plasma.

Anti-PEDF Antibody - Protocols

Provided below are standard protocols that you may find useful for product applications.

- [Western Blot](#)
- [Blocking Peptides](#)
- [Dot Blot](#)
- [Immunohistochemistry](#)
- [Immunofluorescence](#)
- [Immunoprecipitation](#)
- [Flow Cytometry](#)
- [Cell Culture](#)

Anti-PEDF Antibody - Images



Western blot analysis of PEDF expression in HepG2 (A), A2780 (B), PC3 (C), 3T3L1 (D), H9C2 (E) whole cell lysates.

Anti-PEDF Antibody - Background

KLH-conjugated synthetic peptide encompassing a sequence within the center region of human PEDF. The exact sequence is proprietary.