

**Anti-RAP2C Antibody**  
Rabbit polyclonal antibody to RAP2C  
Catalog # AP60624

**Specification**

---

**Anti-RAP2C Antibody - Product Information**

Application	WB
Primary Accession	<a href="#">O9Y3L5</a>
Other Accession	<a href="#">O8BU31</a>
Reactivity	Human, Mouse, Bovine
Host	Rabbit
Clonality	Polyclonal
Calculated MW	20745

**Anti-RAP2C Antibody - Additional Information**

**Gene ID** 57826

**Other Names**

Ras-related protein Rap-2c

**Target/Specificity**

Recognizes endogenous levels of RAP2C protein.

**Dilution**

WB~~WB (1/500 - 1/1000)

**Format**

Liquid in 0.42% Potassium phosphate, 0.87% Sodium chloride, pH 7.3, 30% glycerol, and 0.09% (W/V) sodium azide.

**Storage**

Store at -20 °C. Stable for 12 months from date of receipt

**Anti-RAP2C Antibody - Protein Information**

**Name** RAP2C

**Function**

Small GTP-binding protein which cycles between a GDP-bound inactive and a GTP-bound active form. May play a role in cytoskeletal rearrangements and regulate cell spreading through activation of the effector TNIK. May play a role in SRE-mediated gene transcription.

**Cellular Location**

Cytoplasm. Recycling endosome membrane; Lipid-anchor; Cytoplasmic side

**Tissue Location**

Expressed in liver, skeletal muscle, prostate, uterus, rectum, stomach, and bladder and to a lower

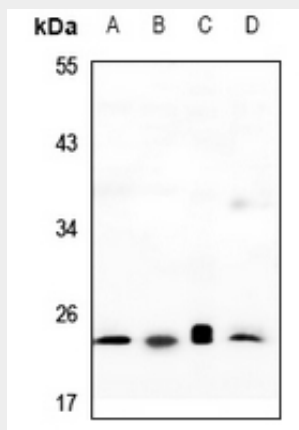
extent in brain, kidney, pancreas, and bone marrow. Expressed in mononuclear leukocytes and megakaryocytes.

### Anti-RAP2C Antibody - Protocols

Provided below are standard protocols that you may find useful for product applications.

- [Western Blot](#)
- [Blocking Peptides](#)
- [Dot Blot](#)
- [Immunohistochemistry](#)
- [Immunofluorescence](#)
- [Immunoprecipitation](#)
- [Flow Cytometry](#)
- [Cell Culture](#)

### Anti-RAP2C Antibody - Images



Western blot analysis of RAP2C expression in LO2 (A), PC3 (B), CT26 (C), MEF (D) whole cell lysates.

### Anti-RAP2C Antibody - Background

KLH-conjugated synthetic peptide encompassing a sequence within the center region of human RAP2C. The exact sequence is proprietary.