

Anti-RAD51D Antibody
Rabbit polyclonal antibody to RAD51D
Catalog # AP60623

Specification

Anti-RAD51D Antibody - Product Information

Application	WB
Primary Accession	O75771
Reactivity	Human, Mouse
Host	Rabbit
Clonality	Polyclonal
Calculated MW	35049

Anti-RAD51D Antibody - Additional Information

Gene ID 5892

Other Names

RAD51L3; DNA repair protein RAD51 homolog 4; R51H3; RAD51 homolog D; RAD51-like protein 3; TRAD

Target/Specificity

Recognizes endogenous levels of RAD51D protein.

Dilution

WB~~WB (1/500 - 1/1000), IH (1/100 - 1/200)

Format

Liquid in 0.42% Potassium phosphate, 0.87% Sodium chloride, pH 7.3, 30% glycerol, and 0.09% (W/V) sodium azide.

Storage

Store at -20 °C. Stable for 12 months from date of receipt

Anti-RAD51D Antibody - Protein Information

Name RAD51D

Synonyms RAD51L3

Function

Involved in the homologous recombination repair (HRR) pathway of double-stranded DNA breaks arising during DNA replication or induced by DNA-damaging agents. Bind to single-stranded DNA (ssDNA) and has DNA-dependent ATPase activity. Part of the RAD51 paralog protein complex BCDX2 which acts in the BRCA1-BRCA2-dependent HR pathway. Upon DNA damage, BCDX2 acts downstream of BRCA2 recruitment and upstream of RAD51 recruitment. BCDX2 binds predominantly to the intersection of the four duplex arms of the Holliday junction and to junction of replication forks. The BCDX2 complex was originally reported to bind single-stranded DNA,

single-stranded gaps in duplex DNA and specifically to nicks in duplex DNA. Involved in telomere maintenance. The BCDX2 subcomplex XRCC2:RAD51D can stimulate Holliday junction resolution by BLM.

Cellular Location

Nucleus. Cytoplasm, cytoskeleton, microtubule organizing center, centrosome. Chromosome, telomere

Tissue Location

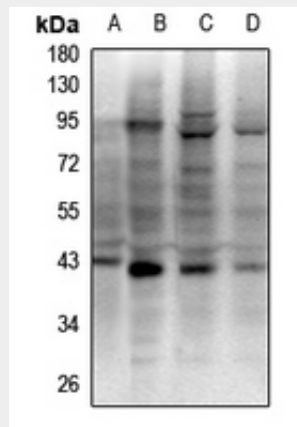
Expressed in colon, prostate, spleen, testis, ovary, thymus and small intestine. Weakly expressed in leukocytes

Anti-RAD51D Antibody - Protocols

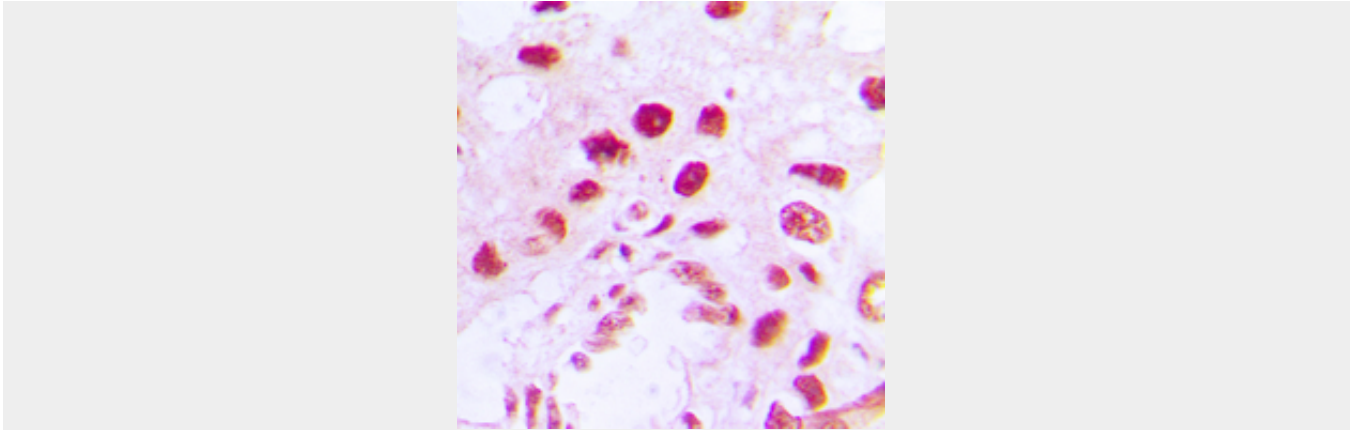
Provided below are standard protocols that you may find useful for product applications.

- [Western Blot](#)
- [Blocking Peptides](#)
- [Dot Blot](#)
- [Immunohistochemistry](#)
- [Immunofluorescence](#)
- [Immunoprecipitation](#)
- [Flow Cytometry](#)
- [Cell Culture](#)

Anti-RAD51D Antibody - Images



Western blot analysis of RAD51D expression in mouse testis (A), CT26 (B), Jurkat (C), PC3 (D) whole cell lysates.



Immunohistochemical analysis of RAD51D staining in human lung cancer formalin fixed paraffin embedded tissue section. The section was pre-treated using heat mediated antigen retrieval with sodium citrate buffer (pH 6.0). The section was then incubated with the antibody at room temperature and detected using an HRP conjugated compact polymer system. DAB was used as the chromogen. The section was then counterstained with haematoxylin and mounted with DPX.

Anti-RAD51D Antibody - Background

KLH-conjugated synthetic peptide encompassing a sequence within the center region of human RAD51D. The exact sequence is proprietary.