

Anti-PTP alpha Antibody
Rabbit polyclonal antibody to PTP alpha
Catalog # AP60622

Specification

Anti-PTP alpha Antibody - Product Information

Application	WB
Primary Accession	P18433
Other Accession	P18052
Reactivity	Human, Mouse, Rat
Host	Rabbit
Clonality	Polyclonal
Calculated MW	90719

Anti-PTP alpha Antibody - Additional Information

Gene ID 5786

Other Names

PTPA; PTPRL2; Receptor-type tyrosine-protein phosphatase alpha; Protein-tyrosine phosphatase alpha; R-PTP-alpha

Target/Specificity

Recognizes endogenous levels of PTP alpha protein.

Dilution

WB~~WB (1/500 - 1/1000)

Format

Liquid in 0.42% Potassium phosphate, 0.87% Sodium chloride, pH 7.3, 30% glycerol, and 0.09% (W/V) sodium azide.

Storage

Store at -20 °C. Stable for 12 months from date of receipt

Anti-PTP alpha Antibody - Protein Information

Name PTPRA

Synonyms PTPA, PTPRL2

Function

Tyrosine protein phosphatase which is involved in integrin- mediated focal adhesion formation (By similarity). Following integrin engagement, specifically recruits BCAR3, BCAR1 and CRK to focal adhesions thereby promoting SRC-mediated phosphorylation of BRAC1 and the subsequent activation of PAK and small GTPase RAC1 and CDC42 (By similarity).

Cellular Location

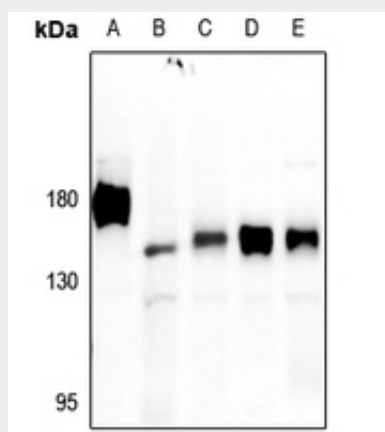
Cell membrane; Single-pass type I membrane protein. Cell junction, focal adhesion {ECO:0000250|UniProtKB:P18052}. Note=Localizes to focal adhesion sites following integrin engagement. {ECO:0000250|UniProtKB:P18052}

Anti-PTP alpha Antibody - Protocols

Provided below are standard protocols that you may find useful for product applications.

- [Western Blot](#)
- [Blocking Peptides](#)
- [Dot Blot](#)
- [Immunohistochemistry](#)
- [Immunofluorescence](#)
- [Immunoprecipitation](#)

Anti-PTP alpha Antibody - Images



Western blot analysis of PTP alpha expression in HCT116 (A), Myla2059 (B), C6 (C), CT26 (D), HeLa (E) whole cell lysates.

Anti-PTP alpha Antibody - Background

KLH-conjugated synthetic peptide encompassing a sequence within the C-term region of human PTP alpha. The exact sequence is proprietary.