

Anti-PGD2 Receptor Antibody
Rabbit polyclonal antibody to PGD2 Receptor
Catalog # AP60620

Specification

Anti-PGD2 Receptor Antibody - Product Information

Application	WB, IF
Primary Accession	O13258
Other Accession	P70263
Reactivity	Human, Mouse, Rat
Host	Rabbit
Clonality	Polyclonal
Calculated MW	40271

Anti-PGD2 Receptor Antibody - Additional Information

Gene ID 5729

Other Names

Prostaglandin D2 receptor; PGD receptor; PGD2 receptor; Prostanoid DP receptor

Target/Specificity

Recognizes endogenous levels of PGD2 Receptor protein.

Dilution

WB~~WB (1/500 - 1/1000), IF/IC (1/100 - 1/500)

IF~~WB (1/500 - 1/1000), IF/IC (1/100 - 1/500)

Format

Liquid in 0.42% Potassium phosphate, 0.87% Sodium chloride, pH 7.3, 30% glycerol, and 0.09% (W/V) sodium azide.

Storage

Store at -20 °C. Stable for 12 months from date of receipt

Anti-PGD2 Receptor Antibody - Protein Information

Name PTGDR

Function

Receptor for prostaglandin D2 (PGD2). The activity of this receptor is mainly mediated by G(s) proteins that stimulate adenylate cyclase, resulting in an elevation of intracellular cAMP. A mobilization of calcium is also observed, but without formation of inositol 1,4,5-trisphosphate (By similarity). Involved in PLA2G3- dependent maturation of mast cells. PLA2G3 is secreted by immature mast cells and acts on nearby fibroblasts upstream to PTDGS to synthesize PGD2, which in turn promotes mast cell maturation and degranulation via PTGDR (By similarity).

Cellular Location

Cell membrane; Multi-pass membrane protein

Tissue Location

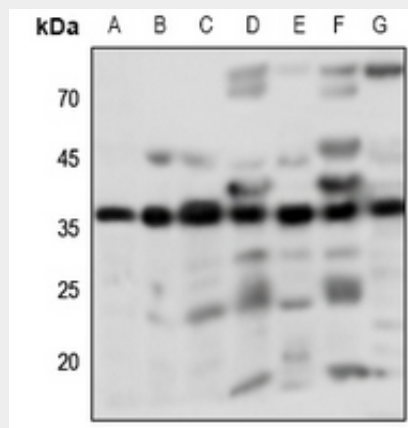
Expressed in retinal choroid, ciliary epithelium, longitudinal and circular ciliary muscles, iris, small intestine and platelet membranes.

Anti-PGD2 Receptor Antibody - Protocols

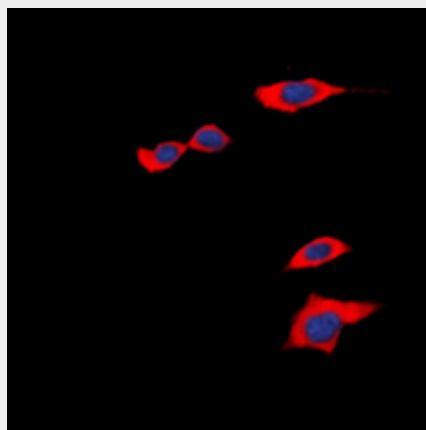
Provided below are standard protocols that you may find useful for product applications.

- [Western Blot](#)
- [Blocking Peptides](#)
- [Dot Blot](#)
- [Immunohistochemistry](#)
- [Immunofluorescence](#)
- [Immunoprecipitation](#)
- [Flow Cytometry](#)
- [Cell Culture](#)

Anti-PGD2 Receptor Antibody - Images



Western blot analysis of PGD2 Receptor expression in HEK293T (A), Hela (B), HepG2 (C), mouse lung (D), mouse brain (E), mouse kidney (F), rat kidney (G) whole cell lysates.



Immunofluorescent analysis of PGD2 Receptor staining in HEK293T cells. Formalin-fixed cells were permeabilized with 0.1% Triton X-100 in TBS for 5-10 minutes and blocked with 3% BSA-PBS

for 30 minutes at room temperature. Cells were probed with the primary antibody in 3% BSA-PBS and incubated overnight at 4 °C in a humidified chamber. Cells were washed with PBST and incubated with a DyLight 594-conjugated secondary antibody (red) in PBS at room temperature in the dark. DAPI was used to stain the cell nuclei (blue).

Anti-PGD2 Receptor Antibody - Background

KLH-conjugated synthetic peptide encompassing a sequence within the C-term region of human PGD2 Receptor. The exact sequence is proprietary.