

Anti-GPR73a Antibody
Rabbit polyclonal antibody to GPR73a
Catalog # AP60619

Specification

Anti-GPR73a Antibody - Product Information

Application	WB, IF
Primary Accession	O8TCW9
Other Accession	O9JKL1
Reactivity	Human, Mouse, Rat, Bovine
Host	Rabbit
Clonality	Polyclonal
Calculated MW	44770

Anti-GPR73a Antibody - Additional Information

Gene ID 10887

Other Names

GPR73; PKR1; Prokineticin receptor 1; PK-R1; G-protein coupled receptor 73; G-protein coupled receptor ZAQ; GPR73a

Target/Specificity

Recognizes endogenous levels of GPR73a protein.

Dilution

WB~~WB (1/500 - 1/1000), IF/IC (1/100 - 1/500)
IF~~WB (1/500 - 1/1000), IF/IC (1/100 - 1/500)

Format

Liquid in 0.42% Potassium phosphate, 0.87% Sodium chloride, pH 7.3, 30% glycerol, and 0.09% (W/V) sodium azide.

Storage

Store at -20 °C. Stable for 12 months from date of receipt

Anti-GPR73a Antibody - Protein Information

Name PROKR1

Synonyms GPR73, PKR1

Function

Receptor for prokineticin 1. Exclusively coupled to the G(q) subclass of heteromeric G proteins. Activation leads to mobilization of calcium, stimulation of phosphoinositide turnover and activation of p44/p42 mitogen-activated protein kinase. May play a role during early pregnancy.

Cellular Location

Cell membrane; Multi-pass membrane protein.

Tissue Location

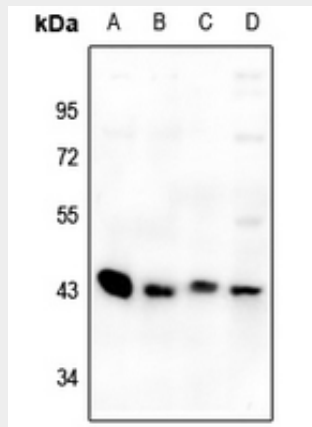
Localizes to glandular epithelium, stroma and vascular endothelial cells of first trimester decidua (at protein level). Up-regulated in first trimester decidua when compared with non-pregnant endometrium. Expressed in the stomach, throughout the small intestine, colon, rectum, thyroid gland, pituitary gland, salivary gland, adrenal gland, testis, ovary, brain, spleen, prostate and pancreas.

Anti-GPR73a Antibody - Protocols

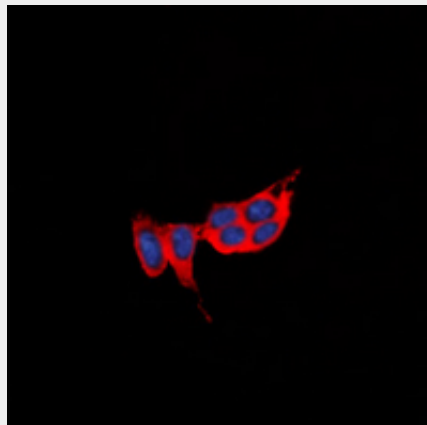
Provided below are standard protocols that you may find useful for product applications.

- [Western Blot](#)
- [Blocking Peptides](#)
- [Dot Blot](#)
- [Immunohistochemistry](#)
- [Immunofluorescence](#)
- [Immunoprecipitation](#)
- [Flow Cytometry](#)
- [Cell Culture](#)

Anti-GPR73a Antibody - Images



Western blot analysis of GPR73a expression in BV2 (A), H9C2 (B), HCC827 (C), HEK293T (D) whole cell lysates.



Immunofluorescent analysis of GPR73a staining in Jurkat cells. Formalin-fixed cells were permeabilized with 0.1% Triton X-100 in TBS for 5-10 minutes and blocked with 3% BSA-PBS for 30 minutes at room temperature. Cells were probed with the primary antibody in 3% BSA-PBS and incubated overnight at 4 °C in a humidified chamber. Cells were washed with PBST and incubated with a DyLight 594-conjugated secondary antibody (red) in PBS at room temperature in the dark. DAPI was used to stain the cell nuclei (blue).

Anti-GPR73a Antibody - Background

KLH-conjugated synthetic peptide encompassing a sequence within the N-term region of human GPR73a. The exact sequence is proprietary.