

**Anti-CD201 Antibody**  
Rabbit polyclonal antibody to CD201  
Catalog # AP60618

**Specification**

---

**Anti-CD201 Antibody - Product Information**

Application	WB
Primary Accession	<a href="#">O9UNN8</a>
Reactivity	Human, Rat, Bovine
Host	Rabbit
Clonality	Polyclonal
Calculated MW	26671

**Anti-CD201 Antibody - Additional Information**

**Gene ID** 10544

**Other Names**

EPCR; Endothelial protein C receptor; Activated protein C receptor; APC receptor; Endothelial cell protein C receptor; CD201

**Target/Specificity**

Recognizes endogenous levels of CD201 protein.

**Dilution**

WB~~WB (1/500 - 1/1000)

**Format**

Liquid in 0.42% Potassium phosphate, 0.87% Sodium chloride, pH 7.3, 30% glycerol, and 0.09% (W/V) sodium azide.

**Storage**

Store at -20 °C. Stable for 12 months from date of receipt

**Anti-CD201 Antibody - Protein Information**

**Name** PROCR

**Synonyms** EPCR

**Function**

Binds activated protein C. Enhances protein C activation by the thrombin-thrombomodulin complex; plays a role in the protein C pathway controlling blood coagulation.

**Cellular Location**

Membrane; Single-pass type I membrane protein.

**Tissue Location**

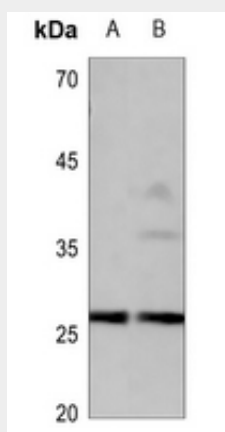
Expressed strongly in the endothelial cells of arteries and veins in heart and lung, less intensely in capillaries in the lung and skin, and not at all in the endothelium of small vessels of the liver and kidney

### Anti-CD201 Antibody - Protocols

Provided below are standard protocols that you may find useful for product applications.

- [Western Blot](#)
- [Blocking Peptides](#)
- [Dot Blot](#)
- [Immunohistochemistry](#)
- [Immunofluorescence](#)
- [Immunoprecipitation](#)
- [Flow Cytometry](#)
- [Cell Culture](#)

### Anti-CD201 Antibody - Images



Western blot analysis of CD201 expression in HEK293T (A), A549 (B) whole cell lysates.

### Anti-CD201 Antibody - Background

KLH-conjugated synthetic peptide encompassing a sequence within the center region of human CD201. The exact sequence is proprietary.