

Anti-PKA C alpha/beta/gamma (pT198) Antibody
Rabbit polyclonal antibody to PKA C alpha/beta/gamma (pT198)
Catalog # AP60612

Specification

Anti-PKA C alpha/beta/gamma (pT198) Antibody - Product Information

Application	WB, IF
Primary Accession	P17612 , P22694 , P22612
Other Accession	P05132 , P68181
Reactivity	Human, Mouse, Rat, Pig, Bovine, SARS, Dog
Host	Rabbit
Clonality	Polyclonal

Anti-PKA C alpha/beta/gamma (pT198) Antibody - Additional Information

Other Names

PRKACA; PKACA; cAMP-dependent protein kinase catalytic subunit alpha; PKA C-alpha; PRKACB; cAMP-dependent protein kinase catalytic subunit beta; PKA C-beta; PRKACG; cAMP-dependent protein kinase catalytic subunit gamma; PKA C-gamma

Target/Specificity

Recognizes endogenous levels of PKA C alpha/beta/gamma (pT198) protein.

Dilution

WB~~WB (1/500 - 1/1000), IH (1/100 - 1/200), IF/IC (1/100 - 1/500)
IF~~WB (1/500 - 1/1000), IH (1/100 - 1/200), IF/IC (1/100 - 1/500)

Format

Liquid in 0.42% Potassium phosphate, 0.87% Sodium chloride, pH 7.3, 30% glycerol, and 0.09% (W/V) sodium azide.

Storage

Store at -20 °C. Stable for 12 months from date of receipt

Anti-PKA C alpha/beta/gamma (pT198) Antibody - Protein Information

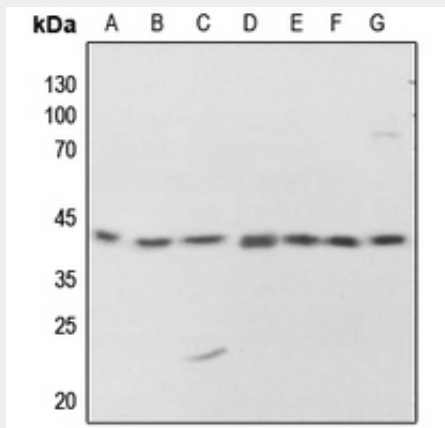
Anti-PKA C alpha/beta/gamma (pT198) Antibody - Protocols

Provided below are standard protocols that you may find useful for product applications.

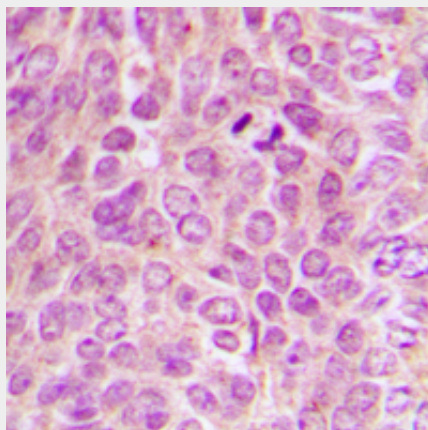
- [Western Blot](#)
- [Blocking Peptides](#)
- [Dot Blot](#)
- [Immunohistochemistry](#)
- [Immunofluorescence](#)

- [Immunoprecipitation](#)
- [Flow Cytometry](#)
- [Cell Culture](#)

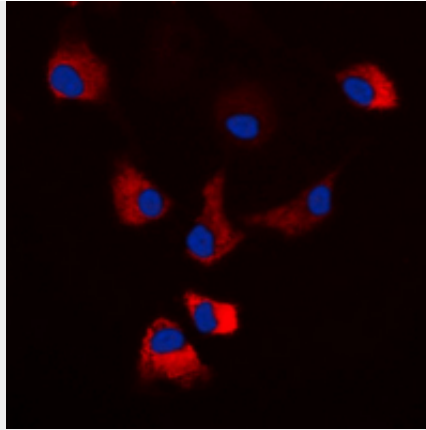
Anti-PKA C alpha/beta/gamma (pT198) Antibody - Images



Western blot analysis of PKA C alpha/beta/gamma (pT198) expression in HEK293T (A), HeLa (B), H446 (C), mouse testis (D), mouse spleen (E), rat testis (F), rat spleen (G) whole cell lysates.



Immunohistochemical analysis of PKA C alpha/beta/gamma (pT198) staining in human breast cancer formalin fixed paraffin embedded tissue section. The section was pre-treated using heat mediated antigen retrieval with sodium citrate buffer (pH 6.0). The section was then incubated with the antibody at room temperature and detected using an HRP conjugated compact polymer system. DAB was used as the chromogen. The section was then counterstained with haematoxylin and mounted with DPX.



Immunofluorescent analysis of PKA C alpha/beta/gamma (pT198) staining in HEK293T cells. Formalin-fixed cells were permeabilized with 0.1% Triton X-100 in TBS for 5-10 minutes and blocked with 3% BSA-PBS for 30 minutes at room temperature. Cells were probed with the primary antibody in 3% BSA-PBS and incubated overnight at 4 °C in a humidified chamber. Cells were washed with PBST and incubated with a DyLight 594-conjugated secondary antibody (red) in PBS at room temperature in the dark. DAPI was used to stain the cell nuclei (blue).

Anti-PKA C alpha/beta/gamma (pT198) Antibody - Background

KLH-conjugated synthetic peptide encompassing a sequence within the center region of human PKA C alpha/beta/gamma. The exact sequence is proprietary.