

Anti-MYPT1 (pT853) Antibody
Rabbit polyclonal antibody to MYPT1 (pT853)
Catalog # AP60611

Specification

Anti-MYPT1 (pT853) Antibody - Product Information

| | |
|-------------------|---------------------------------------|
| Application | WB |
| Primary Accession | O14974 |
| Other Accession | Q9DBR7 |
| Reactivity | Human, Mouse, Rat, Zebrafish, Chicken |
| Host | Rabbit |
| Clonality | Polyclonal |
| Calculated MW | 115281 |

Anti-MYPT1 (pT853) Antibody - Additional Information

Gene ID 4659

Other Names

MBS; MYPT1; Protein phosphatase 1 regulatory subunit 12A; Myosin phosphatase-targeting subunit 1; Myosin phosphatase target subunit 1; Protein phosphatase myosin-binding subunit

Target/Specificity

Recognizes endogenous levels of MYPT1 (pT853) protein.

Dilution

WB~~WB (1/500 - 1/1000), IH (1/100 - 1/200)

Format

Liquid in 0.42% Potassium phosphate, 0.87% Sodium chloride, pH 7.3, 30% glycerol, and 0.09% (W/V) sodium azide.

Storage

Store at -20 °C. Stable for 12 months from date of receipt

Anti-MYPT1 (pT853) Antibody - Protein Information

Name PPP1R12A ([HGNC:7618](#))

Function

Key regulator of protein phosphatase 1C (PPP1C). Mediates binding to myosin. As part of the PPP1C complex, involved in dephosphorylation of PLK1. Capable of inhibiting HIF1AN-dependent suppression of HIF1A activity.

Cellular Location

Cytoplasm. Cytoplasm, cytoskeleton, stress fiber. Note=Also along actomyosin filaments

Tissue Location

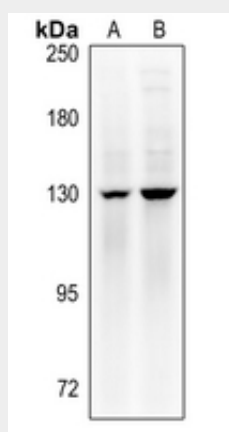
Expressed in striated muscles, specifically in type 2a fibers (at protein level).

Anti-MYPT1 (pT853) Antibody - Protocols

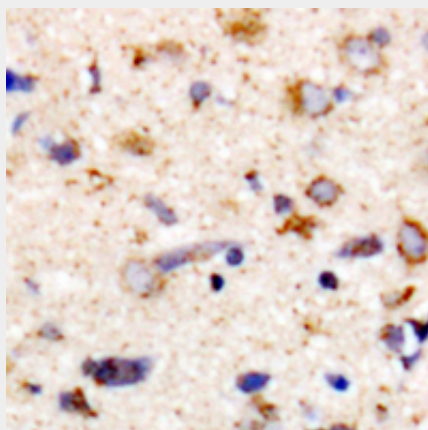
Provided below are standard protocols that you may find useful for product applications.

- [Western Blot](#)
- [Blocking Peptides](#)
- [Dot Blot](#)
- [Immunohistochemistry](#)
- [Immunofluorescence](#)
- [Immunoprecipitation](#)
- [Flow Cytometry](#)
- [Cell Culture](#)

Anti-MYPT1 (pT853) Antibody - Images



Western blot analysis of MYPT1 (pT853) expression in C6 (A), MCF7 (B) whole cell lysates.



Immunohistochemical analysis of MYPT1 (pT853) staining in human brain formalin fixed paraffin embedded tissue section. The section was pre-treated using heat mediated antigen retrieval with sodium citrate buffer (pH 6.0). The section was then incubated with the antibody at room temperature and detected using an HRP conjugated compact polymer system. DAB was used as the chromogen. The section was then counterstained with haematoxylin and mounted with DPX.

Anti-MYPT1 (pT853) Antibody - Background

KLH-conjugated synthetic peptide encompassing a sequence within the center region of human MYPT1. The exact sequence is proprietary.