

**Anti-P2Y8 Antibody**  
Rabbit polyclonal antibody to P2Y8  
Catalog # AP60604

**Specification**

---

**Anti-P2Y8 Antibody - Product Information**

Application	WB, IF
Primary Accession	<a href="#">Q86VZ1</a>
Reactivity	Human, Mouse, Rat
Host	Rabbit
Clonality	Polyclonal
Calculated MW	40635

**Anti-P2Y8 Antibody - Additional Information**

**Gene ID** 286530

**Other Names**

P2Y purinoceptor 8; P2Y8

**Target/Specificity**

Recognizes endogenous levels of P2Y8 protein.

**Dilution**

WB~~WB (1/500 - 1/1000), IF/IC (1/100 - 1/500)

IF~~WB (1/500 - 1/1000), IF/IC (1/100 - 1/500)

**Format**

Liquid in 0.42% Potassium phosphate, 0.87% Sodium chloride, pH 7.3, 30% glycerol, and 0.09% (W/V) sodium azide.

**Storage**

Store at -20 °C. Stable for 12 months from date of receipt

**Anti-P2Y8 Antibody - Protein Information**

**Name** P2RY8

**Function**

Probable receptor for purines coupled to G-proteins.

**Cellular Location**

Cell membrane; Multi-pass membrane protein.

**Tissue Location**

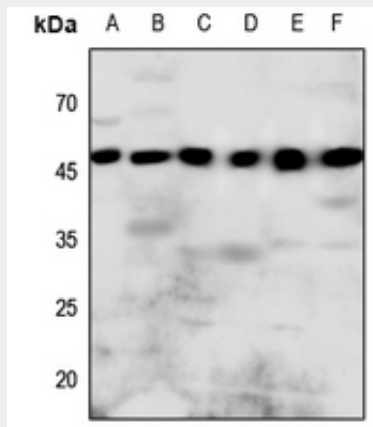
Barely detectable in normal blood leukocytes. Weaker expression was seen in heart, kidney and lung. Not detected in brain.

## Anti-P2Y8 Antibody - Protocols

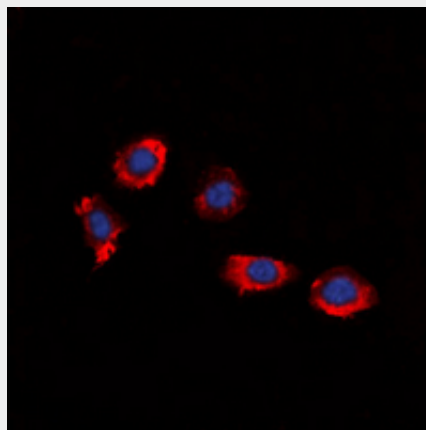
Provided below are standard protocols that you may find useful for product applications.

- [Western Blot](#)
- [Blocking Peptides](#)
- [Dot Blot](#)
- [Immunohistochemistry](#)
- [Immunofluorescence](#)
- [Immunoprecipitation](#)
- [Flow Cytometry](#)
- [Cell Culture](#)

## Anti-P2Y8 Antibody - Images



Western blot analysis of P2Y8 expression in Hela (A), mouse lung (B), mouse heart (C), mouse kidney (D), rat heart (E), rat kidney (F) whole cell lysates.



Immunofluorescent analysis of P2Y8 staining in HuvEc cells. Formalin-fixed cells were permeabilized with 0.1% Triton X-100 in TBS for 5-10 minutes and blocked with 3% BSA-PBS for 30 minutes at room temperature. Cells were probed with the primary antibody in 3% BSA-PBS and incubated overnight at 4 °C in a humidified chamber. Cells were washed with PBST and incubated with a DyLight 594-conjugated secondary antibody (red) in PBS at room temperature in the dark. DAPI was used to stain the cell nuclei (blue).

## Anti-P2Y8 Antibody - Background

KLH-conjugated synthetic peptide encompassing a sequence within the center region of human P2Y8. The exact sequence is proprietary.