

Anti-P2Y4 Antibody
Rabbit polyclonal antibody to P2Y4
Catalog # AP60603

Specification

Anti-P2Y4 Antibody - Product Information

Application	WB, IF
Primary Accession	P51582
Other Accession	Q9JJS7
Reactivity	Human, Mouse, Rat
Host	Rabbit
Clonality	Polyclonal
Calculated MW	40963

Anti-P2Y4 Antibody - Additional Information

Gene ID 5030

Other Names

NRU; P2Y purinoceptor 4; P2Y4; P2P; Uridine nucleotide receptor; UNR

Target/Specificity

Recognizes endogenous levels of P2Y4 protein.

Dilution

WB~~WB (1/500 - 1/1000), IF/IC (1/100 - 1/500)

IF~~WB (1/500 - 1/1000), IF/IC (1/100 - 1/500)

Format

Liquid in 0.42% Potassium phosphate, 0.87% Sodium chloride, pH 7.3, 30% glycerol, and 0.09% (W/V) sodium azide.

Storage

Store at -20 °C. Stable for 12 months from date of receipt

Anti-P2Y4 Antibody - Protein Information

Name P2RY4

Synonyms NRU

Function

Receptor for UTP and UDP coupled to G-proteins that activate a phosphatidylinositol-calcium second messenger system. Not activated by ATP or ADP.

Cellular Location

Cell membrane; Multi-pass membrane protein.

Tissue Location

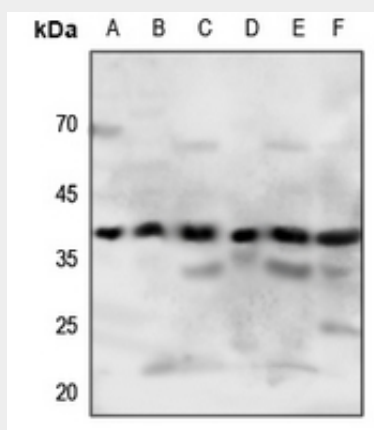
Pancreas.

Anti-P2Y4 Antibody - Protocols

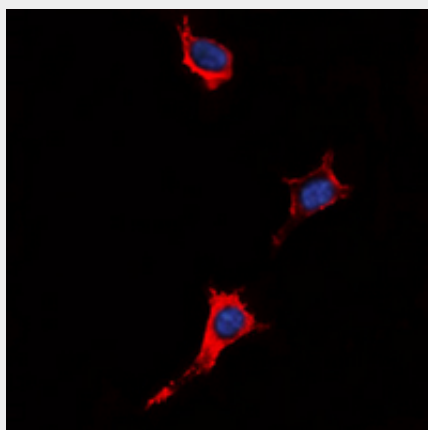
Provided below are standard protocols that you may find useful for product applications.

- [Western Blot](#)
- [Blocking Peptides](#)
- [Dot Blot](#)
- [Immunohistochemistry](#)
- [Immunofluorescence](#)
- [Immunoprecipitation](#)
- [Flow Cytometry](#)
- [Cell Culture](#)

Anti-P2Y4 Antibody - Images



Western blot analysis of P2Y4 expression in HeLa (A), H460 (B), mouse lung (C), mouse brain (D), mouse kidney (E), rat kidney (F) whole cell lysates.



Immunofluorescent analysis of P2Y4 staining in HeLa cells. Formalin-fixed cells were permeabilized with 0.1% Triton X-100 in TBS for 5-10 minutes and blocked with 3% BSA-PBS for 30 minutes at room temperature. Cells were probed with the primary antibody in 3% BSA-PBS and incubated overnight at 4 °C in a humidified chamber. Cells were washed with PBST and incubated with a DyLight 594-conjugated secondary antibody (red) in PBS at room temperature in the dark.

DAPI was used to stain the cell nuclei (blue).

Anti-P2Y4 Antibody - Background

KLH-conjugated synthetic peptide encompassing a sequence within the center region of human P2Y4. The exact sequence is proprietary.