

Anti-GPR86 Antibody
Rabbit polyclonal antibody to GPR86
Catalog # AP60602

Specification

Anti-GPR86 Antibody - Product Information

Application	WB, IF
Primary Accession	O9BPV8
Other Accession	O9D8I2
Reactivity	Human, Mouse, Rat, Monkey
Host	Rabbit
Clonality	Polyclonal
Calculated MW	40789

Anti-GPR86 Antibody - Additional Information

Gene ID 53829

Other Names

GPR86; GPR94; P2Y purinoceptor 13; P2Y13; G-protein coupled receptor 86; G-protein coupled receptor 94

Target/Specificity

Recognizes endogenous levels of GPR86 protein.

Dilution

WB~~WB (1/500 - 1/1000), IF/IC (1/100 - 1/500), IP (1/10 - 1/100)
IF~~WB (1/500 - 1/1000), IF/IC (1/100 - 1/500), IP (1/10 - 1/100)

Format

Liquid in 0.42% Potassium phosphate, 0.87% Sodium chloride, pH 7.3, 30% glycerol, and 0.09% (W/V) sodium azide.

Storage

Store at -20 °C. Stable for 12 months from date of receipt

Anti-GPR86 Antibody - Protein Information

Name P2RY13

Synonyms GPR86, GPR94

Function

Receptor for ADP. Coupled to G(i)-proteins. May play a role in hematopoiesis and the immune system.

Cellular Location

Cell membrane; Multi-pass membrane protein.

Tissue Location

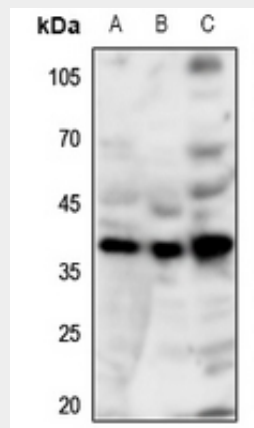
Strong expression in spleen and adult brain. Lower expression in placenta, lung, liver, spinal cord, thymus, small intestine, uterus, stomach, testis, fetal brain, and adrenal gland. Not detected in pancreas, heart, kidney, skeletal muscle, ovary or fetal aorta. Clearly detected in lymph node and bone marrow, weakly detected in peripheral blood mononuclear cells (PBMC) and in peripheral blood leukocytes (PBL), but not detected in polymorphonuclear cells (PMN). In the brain, detected in all brain regions examined

Anti-GPR86 Antibody - Protocols

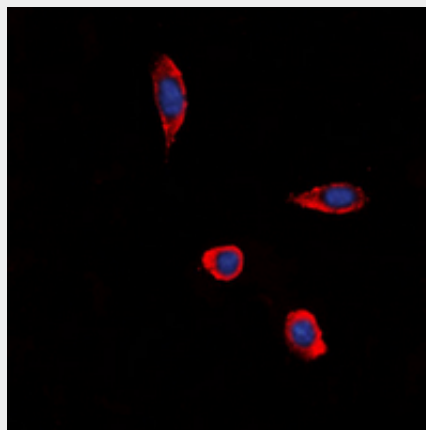
Provided below are standard protocols that you may find useful for product applications.

- [Western Blot](#)
- [Blocking Peptides](#)
- [Dot Blot](#)
- [Immunohistochemistry](#)
- [Immunofluorescence](#)
- [Immunoprecipitation](#)
- [Flow Cytometry](#)
- [Cell Culture](#)

Anti-GPR86 Antibody - Images



Western blot analysis of GPR86 expression in HEK293T (A), Hela (B), HepG2 (C) whole cell lysates.



Immunofluorescent analysis of GPR86 staining in HeLa cells. Formalin-fixed cells were permeabilized with 0.1% Triton X-100 in TBS for 5-10 minutes and blocked with 3% BSA-PBS for 30 minutes at room temperature. Cells were probed with the primary antibody in 3% BSA-PBS and incubated overnight at 4 °C in a humidified chamber. Cells were washed with PBST and incubated with a DyLight 594-conjugated secondary antibody (red) in PBS at room temperature in the dark. DAPI was used to stain the cell nuclei (blue).

Anti-GPR86 Antibody - Background

KLH-conjugated synthetic peptide encompassing a sequence within the center region of human GPR86. The exact sequence is proprietary.