

**Anti-Neuromedin U Antibody**  
Rabbit polyclonal antibody to Neuromedin U  
Catalog # AP60600

### Specification

---

#### Anti-Neuromedin U Antibody - Product Information

Application	WB
Primary Accession	<a href="#">P48645</a>
Reactivity	Human, Rat
Host	Rabbit
Clonality	Polyclonal
Calculated MW	19741

#### Anti-Neuromedin U Antibody - Additional Information

**Gene ID** 10874

**Other Names**  
Neuromedin-U

**Target/Specificity**  
Recognizes endogenous levels of Neuromedin U protein.

**Dilution**  
WB~~WB (1/500 - 1/1000)

**Format**  
Liquid in 0.42% Potassium phosphate, 0.87% Sodium chloride, pH 7.3, 30% glycerol, and 0.09% (W/V) sodium azide.

**Storage**  
Store at -20 °C. Stable for 12 months from date of receipt

#### Anti-Neuromedin U Antibody - Protein Information

**Name** NMU

**Function**  
[Neuromedin-U-25]: Ligand for receptors NMUR1 and NMUR2 (By similarity). Stimulates muscle contractions of specific regions of the gastrointestinal tract. In humans, NmU stimulates contractions of the ileum and urinary bladder.

**Cellular Location**  
Secreted.

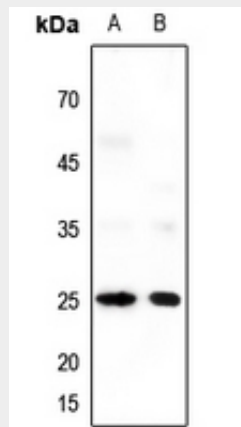
**Tissue Location**  
Expressed throughout the enteric nervous system with highest levels being found in the jejunum

## Anti-Neuromedin U Antibody - Protocols

Provided below are standard protocols that you may find useful for product applications.

- [Western Blot](#)
- [Blocking Peptides](#)
- [Dot Blot](#)
- [Immunohistochemistry](#)
- [Immunofluorescence](#)
- [Immunoprecipitation](#)
- [Flow Cytometry](#)
- [Cell Culture](#)

## Anti-Neuromedin U Antibody - Images



Western blot analysis of Neuromedin U expression in HeLa (A), A549 (B) whole cell lysates.

## Anti-Neuromedin U Antibody - Background

KLH-conjugated synthetic peptide encompassing a sequence within the C-term region of human Neuromedin U. The exact sequence is proprietary.