

Anti-MYBL2 Antibody
Rabbit polyclonal antibody to MYBL2
Catalog # AP60598

Specification

Anti-MYBL2 Antibody - Product Information

Application	WB, IF
Primary Accession	P10244
Other Accession	P48972
Reactivity	Human, Mouse, Rat, Monkey, Chicken
Host	Rabbit
Clonality	Polyclonal
Calculated MW	78764

Anti-MYBL2 Antibody - Additional Information

Gene ID 4605

Other Names

BMYP; Myb-related protein B; B-Myb; Myb-like protein 2

Target/Specificity

Recognizes endogenous levels of MYBL2 protein.

Dilution

WB~~WB (1/500 - 1/1000), IF/IC (1/100 - 1/500)

IF~~WB (1/500 - 1/1000), IF/IC (1/100 - 1/500)

Format

Liquid in 0.42% Potassium phosphate, 0.87% Sodium chloride, pH 7.3, 30% glycerol, and 0.09% (W/V) sodium azide.

Storage

Store at -20 °C. Stable for 12 months from date of receipt

Anti-MYBL2 Antibody - Protein Information

Name MYBL2

Synonyms BMYP

Function

Transcription factor involved in the regulation of cell survival, proliferation, and differentiation. Transactivates the expression of the CLU gene.

Cellular Location

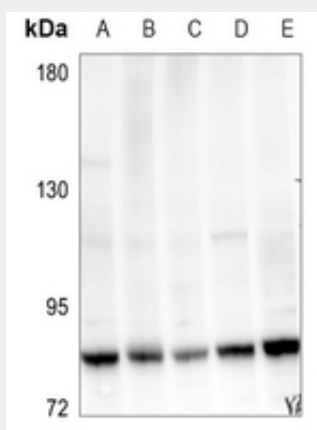
Nucleus.

Anti-MYBL2 Antibody - Protocols

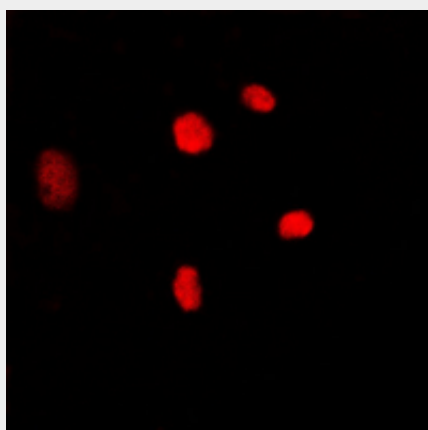
Provided below are standard protocols that you may find useful for product applications.

- [Western Blot](#)
- [Blocking Peptides](#)
- [Dot Blot](#)
- [Immunohistochemistry](#)
- [Immunofluorescence](#)
- [Immunoprecipitation](#)
- [Flow Cytometry](#)
- [Cell Culture](#)

Anti-MYBL2 Antibody - Images



Western blot analysis of MYBL2 expression in Panc1 (A), MEF (B), SHSY5Y (C), Jurkat (D), K562 (E) whole cell lysates.



Immunofluorescent analysis of MYBL2 staining in K562 cells. Formalin-fixed cells were permeabilized with 0.1% Triton X-100 in TBS for 5-10 minutes and blocked with 3% BSA-PBS for 30 minutes at room temperature. Cells were probed with the primary antibody in 3% BSA-PBS and incubated overnight at 4 °C in a humidified chamber. Cells were washed with PBST and incubated with a DyLight 594-conjugated secondary antibody (red) in PBS at room temperature in the dark.

Anti-MYBL2 Antibody - Background

KLH-conjugated synthetic peptide encompassing a sequence within the C-term region of human

MYBL2. The exact sequence is proprietary.