

**Anti-MRPS25 Antibody**  
Rabbit polyclonal antibody to MRPS25  
Catalog # AP60595

**Specification**

---

**Anti-MRPS25 Antibody - Product Information**

Application	WB
Primary Accession	<a href="#">P82663</a>
Other Accession	<a href="#">O9D125</a>
Reactivity	Human, Mouse, Rat
Host	Rabbit
Clonality	Polyclonal
Calculated MW	20116

**Anti-MRPS25 Antibody - Additional Information**

**Gene ID** 64432

**Other Names**

RPMS25; 28S ribosomal protein S25 mitochondrial; MRP-S25; S25mt

**Target/Specificity**

Recognizes endogenous levels of MRPS25 protein.

**Dilution**

WB~~WB (1/500 - 1/1000)

**Format**

Liquid in 0.42% Potassium phosphate, 0.87% Sodium chloride, pH 7.3, 30% glycerol, and 0.09% (W/V) sodium azide.

**Storage**

Store at -20 °C. Stable for 12 months from date of receipt

**Anti-MRPS25 Antibody - Protein Information**

**Name** MRPS25

**Synonyms** RPMS25

**Cellular Location**

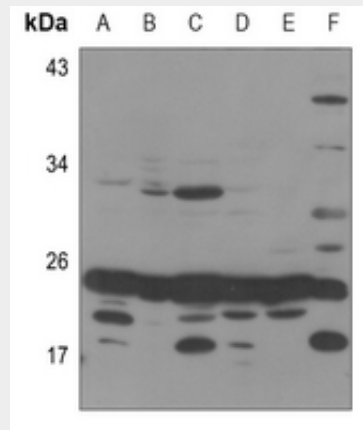
Mitochondrion.

**Anti-MRPS25 Antibody - Protocols**

Provided below are standard protocols that you may find useful for product applications.

- [Western Blot](#)
- [Blocking Peptides](#)
- [Dot Blot](#)
- [Immunohistochemistry](#)
- [Immunofluorescence](#)
- [Immunoprecipitation](#)
- [Flow Cytometry](#)
- [Cell Culture](#)

#### Anti-MRPS25 Antibody - Images



Western blot analysis of MRPS25 expression in mouse kidney (A), mouse lung (B), mouse liver (C), rat kidney (D), rat spleen (E), rat liver (F) whole cell lysates.

#### Anti-MRPS25 Antibody - Background

KLH-conjugated synthetic peptide encompassing a sequence within the C-term region of human MRPS25. The exact sequence is proprietary.