

Anti-MRPL18 Antibody
Rabbit polyclonal antibody to MRPL18
Catalog # AP60594

Specification

Anti-MRPL18 Antibody - Product Information

| | |
|-------------------|------------------------|
| Application | WB |
| Primary Accession | O9H0U6 |
| Reactivity | Human |
| Host | Rabbit |
| Clonality | Polyclonal |
| Calculated MW | 20577 |

Anti-MRPL18 Antibody - Additional Information

Gene ID 29074

Other Names

39S ribosomal protein L18 mitochondrial; L18mt; MRP-L18

Target/Specificity

Recognizes endogenous levels of MRPL18 protein.

Dilution

WB~~WB (1/500 - 1/1000), IH (1/100 - 1/200)

Format

Liquid in 0.42% Potassium phosphate, 0.87% Sodium chloride, pH 7.3, 30% glycerol, and 0.09% (W/V) sodium azide.

Storage

Store at -20 °C. Stable for 12 months from date of receipt

Anti-MRPL18 Antibody - Protein Information

Name MRPL18

Function

Together with thiosulfate sulfurtransferase (TST), acts as a mitochondrial import factor for the cytosolic 5S rRNA. The precursor form shows RNA chaperone activity; is able to fold the 5S rRNA into an import-competent conformation that is recognized by rhodanese (TST). Both the cytoplasmic and mitochondrial forms are able to bind to the helix IV-loop D in the gamma domain of the 5S rRNA.

Cellular Location

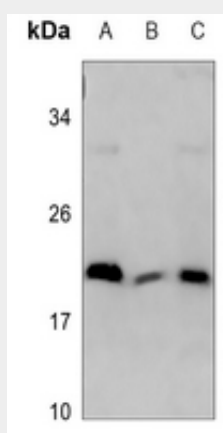
Mitochondrion

Anti-MRPL18 Antibody - Protocols

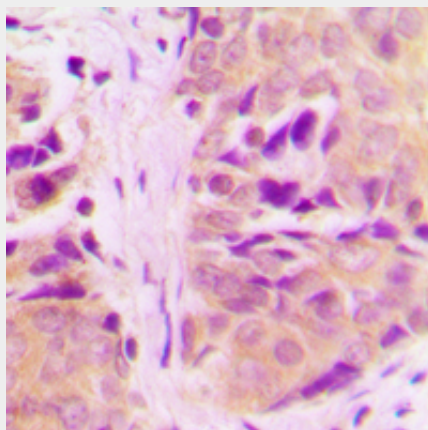
Provided below are standard protocols that you may find useful for product applications.

- [Western Blot](#)
- [Blocking Peptides](#)
- [Dot Blot](#)
- [Immunohistochemistry](#)
- [Immunofluorescence](#)
- [Immunoprecipitation](#)
- [Flow Cytometry](#)
- [Cell Culture](#)

Anti-MRPL18 Antibody - Images



Western blot analysis of MRPL18 expression in HEK293T (A), H1688 (B), H1792 (C) whole cell lysates.



Immunohistochemical analysis of MRPL18 staining in human breast cancer formalin fixed paraffin embedded tissue section. The section was pre-treated using heat mediated antigen retrieval with sodium citrate buffer (pH 6.0). The section was then incubated with the antibody at room temperature and detected using an HRP conjugated compact polymer system. DAB was used as the chromogen. The section was then counterstained with haematoxylin and mounted with DPX.

Anti-MRPL18 Antibody - Background

KLH-conjugated synthetic peptide encompassing a sequence within the N-term region of human MRPL18. The exact sequence is proprietary.