

**Anti-MEIS1 Antibody**  
Rabbit polyclonal antibody to MEIS1  
Catalog # AP60593

**Specification**

---

**Anti-MEIS1 Antibody - Product Information**

Application	WB
Primary Accession	<a href="#">O00470</a>
Other Accession	<a href="#">Q60954</a>
Reactivity	Human, Mouse, Rat
Host	Rabbit
Clonality	Polyclonal
Calculated MW	43016

**Anti-MEIS1 Antibody - Additional Information**

**Gene ID** 4211

**Other Names**

Homeobox protein Meis1

**Target/Specificity**

Recognizes endogenous levels of MEIS1 protein.

**Dilution**

WB~~WB (1/500 - 1/1000)

**Format**

Liquid in 0.42% Potassium phosphate, 0.87% Sodium chloride, pH 7.3, 30% glycerol, and 0.09% (W/V) sodium azide.

**Storage**

Store at -20 °C. Stable for 12 months from date of receipt

**Anti-MEIS1 Antibody - Protein Information**

**Name** MEIS1

**Function**

Acts as a transcriptional regulator of PAX6. Acts as a transcriptional activator of PF4 in complex with PBX1 or PBX2. Required for hematopoiesis, megakaryocyte lineage development and vascular patterning. May function as a cofactor for HOXA7 and HOXA9 in the induction of myeloid leukemias.

**Cellular Location**

Nucleus {ECO:0000255|PROSITE-ProRule:PRU00108}.

**Tissue Location**

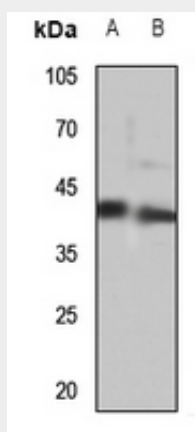
Expressed at low level in normal immunohepatopoietic tissues, including the fetal liver. Expressed in a subset of myeloid leukemia cell lines, with the highest expression seen in those with a megakaryocytic-erythroid phenotype. Also expressed at high levels in the cerebellum

### Anti-MEIS1 Antibody - Protocols

Provided below are standard protocols that you may find useful for product applications.

- [Western Blot](#)
- [Blocking Peptides](#)
- [Dot Blot](#)
- [Immunohistochemistry](#)
- [Immunofluorescence](#)
- [Immunoprecipitation](#)
- [Flow Cytometry](#)
- [Cell Culture](#)

### Anti-MEIS1 Antibody - Images



Western blot analysis of MEIS1 expression in mouse kidney (A), rat kidney (B) whole cell lysates.

### Anti-MEIS1 Antibody - Background

KLH-conjugated synthetic peptide encompassing a sequence within the center region of human MEIS1. The exact sequence is proprietary.