

**Anti-JNK1/2/3 (pT183/Y185) Antibody**  
Rabbit polyclonal antibody to JNK1/2/3 (pT183/Y185)  
Catalog # AP60586

### Specification

---

#### Anti-JNK1/2/3 (pT183/Y185) Antibody - Product Information

Application	WB
Primary Accession	<a href="#">P45983</a> , <a href="#">P45984</a> , <a href="#">P53779</a>
Other Accession	<a href="#">O91Y86</a> , <a href="#">O9WTU6</a> , <a href="#">O61831</a>
Reactivity	Human, Mouse, Rat, Chicken
Host	Rabbit
Clonality	Polyclonal

#### Anti-JNK1/2/3 (pT183/Y185) Antibody - Additional Information

##### Other Names

MAPK8; JNK1; PRKM8; SAPK1; SAPK1C; Mitogen-activated protein kinase 8; MAP kinase 8; MAPK 8; JNK-46; Stress-activated protein kinase 1c; SAPK1c; Stress-activated protein kinase JNK1; c-Jun N-terminal kinase 1; MAPK9; JNK2; PRKM9; SAPK1A; Mitogen-activated protein kinase 9; MAP kinase 9; MAPK 9; JNK-55; Stress-activated protein kinase 1a; SAPK1a; Stress-activated protein kinase JNK2; c-Jun N-terminal kinase 2; MAPK10; JNK3; JNK3A; PRKM10; SAPK1B; Mitogen-activated protein kinase 10; MAP kinase 10; MAPK 10; MAP kinase p49 3F12; Stress-activated protein kinase 1b; SAPK1b; Stress-activated protein kinase JNK3; c-Jun N-terminal kinase 3

##### Target/Specificity

Recognizes endogenous levels of JNK1/2/3 (pT183/Y185) protein.

##### Dilution

WB~~WB (1/500 - 1/1000)

##### Format

Liquid in 0.42% Potassium phosphate, 0.87% Sodium chloride, pH 7.3, 30% glycerol, and 0.09% (W/V) sodium azide.

##### Storage

Store at -20 °C. Stable for 12 months from date of receipt

#### Anti-JNK1/2/3 (pT183/Y185) Antibody - Protein Information

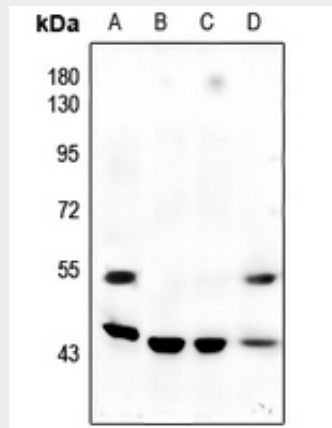
#### Anti-JNK1/2/3 (pT183/Y185) Antibody - Protocols

Provided below are standard protocols that you may find useful for product applications.

- [Western Blot](#)
- [Blocking Peptides](#)
- [Dot Blot](#)

- [Immunohistochemistry](#)
- [Immunofluorescence](#)
- [Immunoprecipitation](#)
- [Flow Cytometry](#)
- [Cell Culture](#)

#### Anti-JNK1/2/3 (pT183/Y185) Antibody - Images



Western blot analysis of JNK1/2/3 (pT183/Y185) expression in BV2 (A), MCF7 (B), HCT116 (C), U87MG (D) whole cell lysates.

#### Anti-JNK1/2/3 (pT183/Y185) Antibody - Background

KLH-conjugated synthetic peptide encompassing a sequence within the center region of human JNK1/2/3. The exact sequence is proprietary.