

Anti-Cytokeratin 8 (pS432) Antibody
Rabbit polyclonal antibody to Cytokeratin 8 (pS432)
Catalog # AP60582

Specification

Anti-Cytokeratin 8 (pS432) Antibody - Product Information

Application	WB, IF
Primary Accession	P05787
Other Accession	P11679
Reactivity	Human, Mouse, Rat
Host	Rabbit
Clonality	Polyclonal
Calculated MW	53704

Anti-Cytokeratin 8 (pS432) Antibody - Additional Information

Gene ID 3856

Other Names

CYK8; Keratin, type II cytoskeletal 8; Cytokeratin-8; CK-8; Keratin-8; K8; Type-II keratin Kb8

Target/Specificity

Recognizes endogenous levels of Cytokeratin 8 (pS432) protein.

Dilution

WB~~WB (1/500 - 1/1000), IH (1/100 - 1/200), IF/IC (1/100 - 1/500)
IF~~WB (1/500 - 1/1000), IH (1/100 - 1/200), IF/IC (1/100 - 1/500)

Format

Liquid in 0.42% Potassium phosphate, 0.87% Sodium chloride, pH 7.3, 30% glycerol, and 0.09% (W/V) sodium azide.

Storage

Store at -20 °C. Stable for 12 months from date of receipt

Anti-Cytokeratin 8 (pS432) Antibody - Protein Information

Name KRT8

Synonyms CYK8

Function

Together with KRT19, helps to link the contractile apparatus to dystrophin at the costameres of striated muscle.

Cellular Location

Cytoplasm. Nucleus, nucleoplasm {ECO:0000250|UniProtKB:Q10758}. Nucleus matrix {ECO:0000250|UniProtKB:Q10758}

Tissue Location

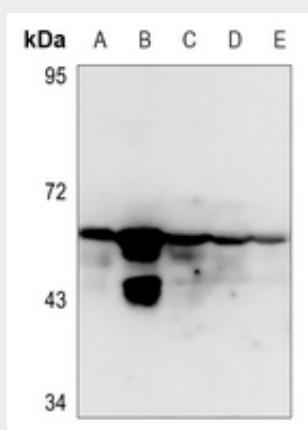
Observed in muscle fibers accumulating in the costameres of myoplasm at the sarcolemma membrane in structures that contain dystrophin and spectrin. Expressed in gingival mucosa and hard palate of the oral cavity.

Anti-Cytokeratin 8 (pS432) Antibody - Protocols

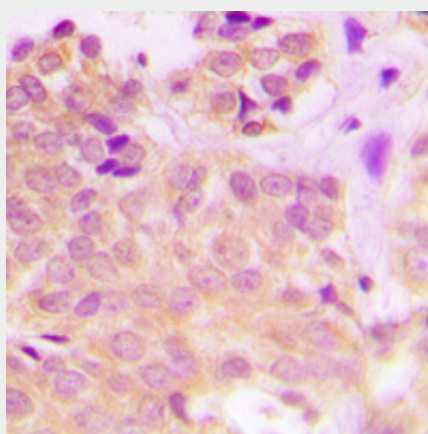
Provided below are standard protocols that you may find useful for product applications.

- [Western Blot](#)
- [Blocking Peptides](#)
- [Dot Blot](#)
- [Immunohistochemistry](#)
- [Immunofluorescence](#)
- [Immunoprecipitation](#)
- [Flow Cytometry](#)
- [Cell Culture](#)

Anti-Cytokeratin 8 (pS432) Antibody - Images

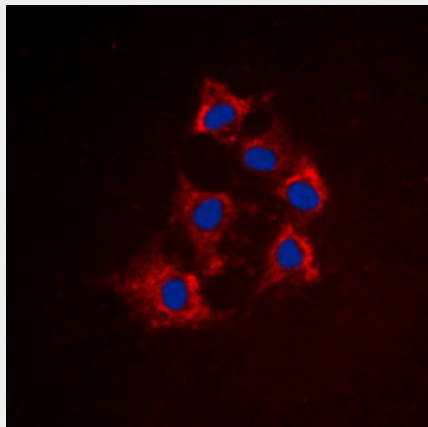


Western blot analysis of Cytokeratin 8 (pS432) expression in Hela (A), A549 (B), mouse lung (C), mouse liver (D), rat lung (E) whole cell lysates.



Immunohistochemical analysis of Cytokeratin 8 (pS432) staining in human breast cancer formalin fixed paraffin embedded tissue section. The section was pre-treated using heat mediated antigen retrieval with sodium citrate buffer (pH 6.0). The section was then incubated with the antibody at

room temperature and detected using an HRP conjugated compact polymer system. DAB was used as the chromogen. The section was then counterstained with haematoxylin and mounted with DPX.



Immunofluorescent analysis of Cytokeratin 8 (pS432) staining in HeLa cells. Formalin-fixed cells were permeabilized with 0.1% Triton X-100 in TBS for 5-10 minutes and blocked with 3% BSA-PBS for 30 minutes at room temperature. Cells were probed with the primary antibody in 3% BSA-PBS and incubated overnight at 4 °C in a humidified chamber. Cells were washed with PBST and incubated with a DyLight 594-conjugated secondary antibody (red) in PBS at room temperature in the dark. DAPI was used to stain the cell nuclei (blue).

Anti-Cytokeratin 8 (pS432) Antibody - Background

KLH-conjugated synthetic peptide encompassing a sequence within the C-term region of human Cytokeratin 8. The exact sequence is proprietary.