

Anti-c-Jun (pS73/100) Antibody
Rabbit polyclonal antibody to c-Jun (pS73/100)
Catalog # AP60578**Specification**

Anti-c-Jun (pS73/100) Antibody - Product Information

Application	WB, IF
Primary Accession	P05412 , P17535
Other Accession	P05627 , P15066
Reactivity	Human, Mouse, Rat, Zebrafish, Pig, Chicken, Bovine
Host	Rabbit
Clonality	Polyclonal

Anti-c-Jun (pS73/100) Antibody - Additional Information**Other Names**

JUN; Transcription factor AP-1; Activator protein 1; AP1; Proto-oncogene c-Jun; V-jun avian sarcoma virus 17 oncogene homolog; p39; JUND; Transcription factor jun-D

Target/Specificity

Recognizes endogenous levels of c-Jun (pS73/100) protein.

Dilution

WB~~WB (1/500 - 1/1000), IH (1/100 - 1/200), IF/IC (1/100 - 1/500), IP (1/10 - 1/100)
IF~~WB (1/500 - 1/1000), IH (1/100 - 1/200), IF/IC (1/100 - 1/500), IP (1/10 - 1/100)

Format

Liquid in 0.42% Potassium phosphate, 0.87% Sodium chloride, pH 7.3, 30% glycerol, and 0.09% (W/V) sodium azide.

Storage

Store at -20 °C. Stable for 12 months from date of receipt

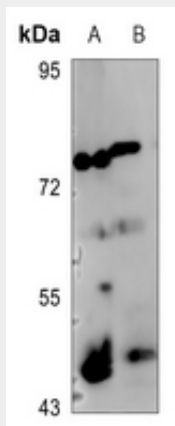
Anti-c-Jun (pS73/100) Antibody - Protein Information**Anti-c-Jun (pS73/100) Antibody - Protocols**

Provided below are standard protocols that you may find useful for product applications.

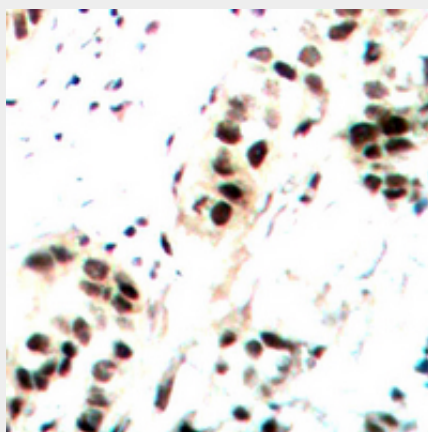
- [Western Blot](#)
- [Blocking Peptides](#)
- [Dot Blot](#)
- [Immunohistochemistry](#)
- [Immunofluorescence](#)
- [Immunoprecipitation](#)

- [Flow Cytometry](#)
- [Cell Culture](#)

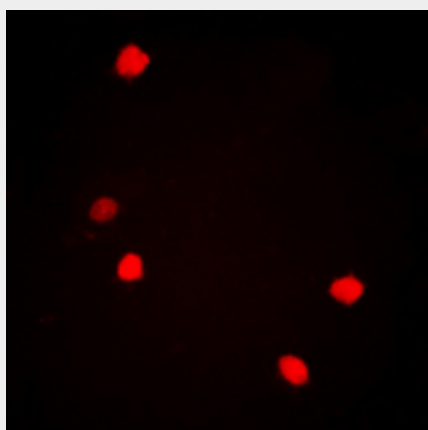
Anti-c-Jun (pS73/100) Antibody - Images



Western blot analysis of c-Jun (pS73/100) expression in HEK293T (A), H1688 (B) whole cell lysates.



Immunohistochemical analysis of c-Jun (pS73/100) staining in human breast cancer formalin fixed paraffin embedded tissue section. The section was pre-treated using heat mediated antigen retrieval with sodium citrate buffer (pH 6.0). The section was then incubated with the antibody at room temperature and detected using an HRP conjugated compact polymer system. DAB was used as the chromogen. The section was then counterstained with haematoxylin and mounted with DPX.



Immunofluorescent analysis of c-Jun (pS73/100) staining in HepG2 cells. Formalin-fixed cells were permeabilized with 0.1% Triton X-100 in TBS for 5-10 minutes and blocked with 3% BSA-PBS for 30 minutes at room temperature. Cells were probed with the primary antibody in 3% BSA-PBS and incubated overnight at 4 °C in a humidified chamber. Cells were washed with PBST and incubated with a DyLight 594-conjugated secondary antibody (red) in PBS at room temperature in the dark.

Anti-c-Jun (pS73/100) Antibody - Background

KLH-conjugated synthetic peptide encompassing a sequence within the center region of human c-Jun. The exact sequence is proprietary.