

Anti-GPR97 Antibody
Rabbit polyclonal antibody to GPR97
Catalog # AP60568

Specification

Anti-GPR97 Antibody - Product Information

Application	WB, IF
Primary Accession	Q86Y34
Other Accession	Q8R0T6
Reactivity	Human, Mouse
Host	Rabbit
Clonality	Polyclonal
Calculated MW	60861

Anti-GPR97 Antibody - Additional Information

Gene ID 222487

Other Names

PGR26; Probable G-protein coupled receptor 97; G-protein coupled receptor PGR26

Target/Specificity

Recognizes endogenous levels of GPR97 protein.

Dilution

WB~~WB (1/500 - 1/1000), IF/IC (1/100 - 1/500)

IF~~WB (1/500 - 1/1000), IF/IC (1/100 - 1/500)

Format

Liquid in 0.42% Potassium phosphate, 0.87% Sodium chloride, pH 7.3, 30% glycerol, and 0.09% (W/V) sodium azide.

Storage

Store at -20 °C. Stable for 12 months from date of receipt

Anti-GPR97 Antibody - Protein Information

Name ADGRG3 ([HGNC:13728](#))

Synonyms GPR97, PGR26

Function

Orphan receptor that regulates migration of lymphatic endothelial cells in vitro via the small GTPases RhoA and CDC42 (PubMed: <http://www.uniprot.org/citations/24178298> target="_blank">24178298). Regulates B-cell development (By similarity). Seems to signal through G-alpha(q)-proteins (PubMed: <http://www.uniprot.org/citations/22575658> target="_blank">22575658).

Cellular Location

Cell membrane; Multi-pass membrane protein

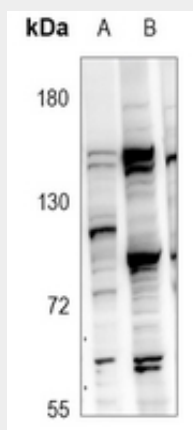
Tissue Location

Expressed in cultured primary dermal lymphatic endothelial cells.

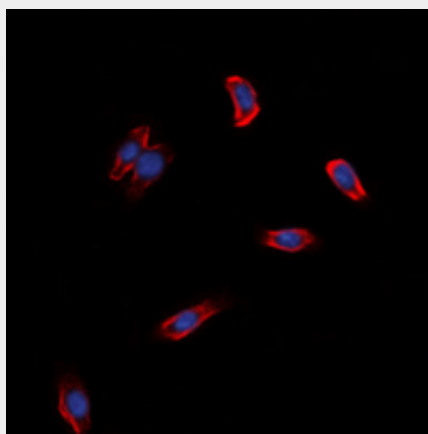
Anti-GPR97 Antibody - Protocols

Provided below are standard protocols that you may find useful for product applications.

- [Western Blot](#)
- [Blocking Peptides](#)
- [Dot Blot](#)
- [Immunohistochemistry](#)
- [Immunofluorescence](#)
- [Immunoprecipitation](#)
- [Flow Cytometry](#)
- [Cell Culture](#)

Anti-GPR97 Antibody - Images

Western blot analysis of GPR97 expression in HepG2 (A), SP20 (B) whole cell lysates.



Immunofluorescent analysis of GPR97 staining in HeLa cells. Formalin-fixed cells were permeabilized with 0.1% Triton X-100 in TBS for 5-10 minutes and blocked with 3% BSA-PBS for 30 minutes at room temperature. Cells were probed with the primary antibody in 3% BSA-PBS and

incubated overnight at 4 °C in a humidified chamber. Cells were washed with PBST and incubated with a DyLight 594-conjugated secondary antibody (red) in PBS at room temperature in the dark. DAPI was used to stain the cell nuclei (blue).

Anti-GPR97 Antibody - Background

KLH-conjugated synthetic peptide encompassing a sequence within the center region of human GPR97. The exact sequence is proprietary.