

Anti-GPR113 Antibody
Rabbit polyclonal antibody to GPR113
Catalog # AP60567

Specification

Anti-GPR113 Antibody - Product Information

Application	WB
Primary Accession	Q8IZF5
Reactivity	Human, Mouse
Host	Rabbit
Clonality	Polyclonal
Calculated MW	116341

Anti-GPR113 Antibody - Additional Information

Gene ID 165082

Other Names

PGR23; Probable G-protein coupled receptor 113; G-protein coupled receptor PGR23

Target/Specificity

Recognizes endogenous levels of GPR113 protein.

Dilution

WB~~WB (1/500 - 1/1000)

Format

Liquid in 0.42% Potassium phosphate, 0.87% Sodium chloride, pH 7.3, 30% glycerol, and 0.09% (W/V) sodium azide.

Storage

Store at -20 °C. Stable for 12 months from date of receipt

Anti-GPR113 Antibody - Protein Information

Name ADGRF3

Synonyms GPR113, PGR23

Function

Orphan receptor.

Cellular Location

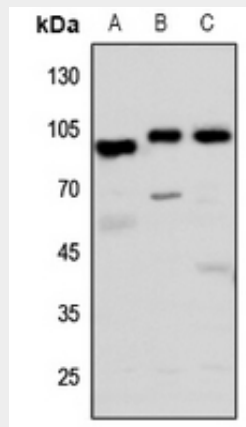
Membrane; Multi-pass membrane protein

Anti-GPR113 Antibody - Protocols

Provided below are standard protocols that you may find useful for product applications.

- [Western Blot](#)
- [Blocking Peptides](#)
- [Dot Blot](#)
- [Immunohistochemistry](#)
- [Immunofluorescence](#)
- [Immunoprecipitation](#)
- [Flow Cytometry](#)
- [Cell Culture](#)

Anti-GPR113 Antibody - Images



Western blot analysis of GPR113 expression in HEK293T (A), HeLa (B), mouse brain (C) whole cell lysates.

Anti-GPR113 Antibody - Background

KLH-conjugated synthetic peptide encompassing a sequence within the N-term region of human GPR113. The exact sequence is proprietary.