

**Anti-GPR101 Antibody**  
Rabbit polyclonal antibody to GPR101  
Catalog # AP60566**Specification**

---

**Anti-GPR101 Antibody - Product Information**

Application	WB, IF
Primary Accession	<a href="#">Q96P66</a>
Reactivity	Human, Mouse, Rat
Host	Rabbit
Clonality	Polyclonal
Calculated MW	56716

**Anti-GPR101 Antibody - Additional Information****Gene ID** 83550**Other Names**

Probable G-protein coupled receptor 101

**Target/Specificity**

Recognizes endogenous levels of GPR101 protein.

**Dilution**

WB~~WB (1/500 - 1/1000), IF/IC (1/100 - 1/500)

IF~~WB (1/500 - 1/1000), IF/IC (1/100 - 1/500)

**Format**

Liquid in 0.42% Potassium phosphate, 0.87% Sodium chloride, pH 7.3, 30% glycerol, and 0.09% (W/V) sodium azide.

**Storage**

Store at -20 °C. Stable for 12 months from date of receipt

**Anti-GPR101 Antibody - Protein Information****Name** GPR101**Function**

Orphan receptor.

**Cellular Location**

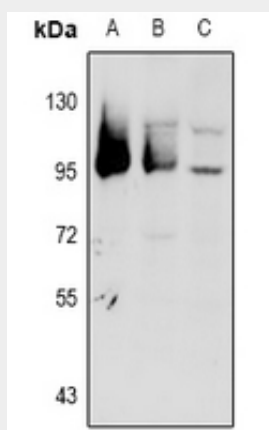
Cell membrane; Multi-pass membrane protein.

**Anti-GPR101 Antibody - Protocols**

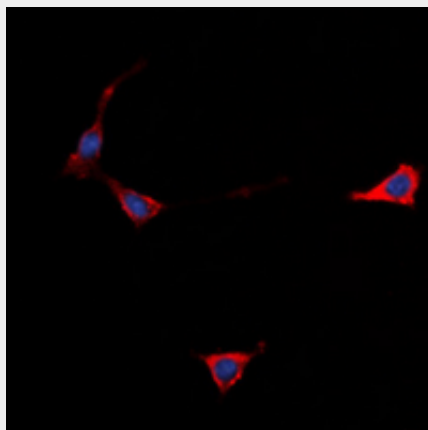
Provided below are standard protocols that you may find useful for product applications.

- [Western Blot](#)
- [Blocking Peptides](#)
- [Dot Blot](#)
- [Immunohistochemistry](#)
- [Immunofluorescence](#)
- [Immunoprecipitation](#)
- [Flow Cytometry](#)
- [Cell Culture](#)

#### Anti-GPR101 Antibody - Images



Western blot analysis of GPR101 expression in BV2 (A), PC12 (B), A549 (C) whole cell lysates.



Immunofluorescent analysis of GPR101 staining in Jurkat cells. Formalin-fixed cells were permeabilized with 0.1% Triton X-100 in TBS for 5-10 minutes and blocked with 3% BSA-PBS for 30 minutes at room temperature. Cells were probed with the primary antibody in 3% BSA-PBS and incubated overnight at 4 °C in a humidified chamber. Cells were washed with PBST and incubated with a DyLight 594-conjugated secondary antibody (red) in PBS at room temperature in the dark. DAPI was used to stain the cell nuclei (blue).

#### Anti-GPR101 Antibody - Background

KLH-conjugated synthetic peptide encompassing a sequence within the center region of human GPR101. The exact sequence is proprietary.